



**Models L2024A, L2024HDA, L2424A
Tag Trailer
Parts Manual**



LANDOLL COMPANY, LLC.

1900 North Street
Marysville, Kansas 66508
(785) 562-5381

800-428-5655 ~ WWW.LANDOLL.COM

Table of Contents

1 Illustrated Parts list

Instructions For Ordering Parts	1-1
General Assembly	1-2
Decals	1-4
Decal Installation	1-4
Floor Assemblies	1-8
Floor Assembly	1-8
Hitch Assemblies	1-10
Pintle Hitch Assembly	1-10
Pintle Hitch, Landing Legs, Dual, Gear, 2 Spd (OPTION)	1-12
Gooseneck Hitch Assembly	1-14
Electrical System	1-16
Electrical System - W/ Electric Brakes	1-16
Electrical System - W/ Air Brake System	1-18
Air System & ABS Brake Kit	1-20
Air System W/ ABS	1-20
ABS Brake Kit - Rockwell	1-22
Suspension Assemblies	1-24
Suspension Assembly	1-24
Axle & Brake Assemblies	1-26
Air Brake - 10K HD & 12K	1-26
Electric Brake - 10K HD & 12K	1-30
Hub & Drum Assembly - 10K HD & 12K	1-32
Landing Leg Assemblies	1-34
Landing Leg Components, Pintle Hitch, Drop Leg	1-34
Landing Leg Components, Pintle Hitch, Dual, Gear, 2 Spd (OPTION)	1-36
Landing Leg Components, Gooseneck, Drop Leg	1-38
Mud Flaps	1-40
Mud Flap Assembly	1-40
Ramps	1-42
Ramp Assembly W/ Pins & Spring	1-42
Ramp Assembly - Center (Option)	1-43
Options	1-44
Anchor Ramp Upright Assembly (Option)	1-44
Beavertail Filler Installation (Option)	1-46
Toolbox Bottom Assembly (Option)	1-48
Tool Compartment Cover Assembly (Option)	1-50
Traction Bar Installation (Option)	1-52

Illustrated Parts list

Instructions For Ordering Parts

ORDER PARTS FROM LANDOLL PARTS DISTRIBUTION CENTER

**** Repair parts must be ordered through an Authorized Dealer ****

PHONE NO: 800-423-4320 OR 785-562-5381
ORDER ONLINE: dealer.landoll.com

FAX NO: 888-527-3909

IDENTIFICATION PLATE

The identification plate, which lists the model number and serial number, is located on the front of the frame (See Figure 1-1.)

SERIAL NUMBER NOMENCLATURE

The serial number for the Models L2024A, 2024HDA, & 2424A Series Trailers are located on the identification plate.



Figure 1-1: Identification Plate and Location

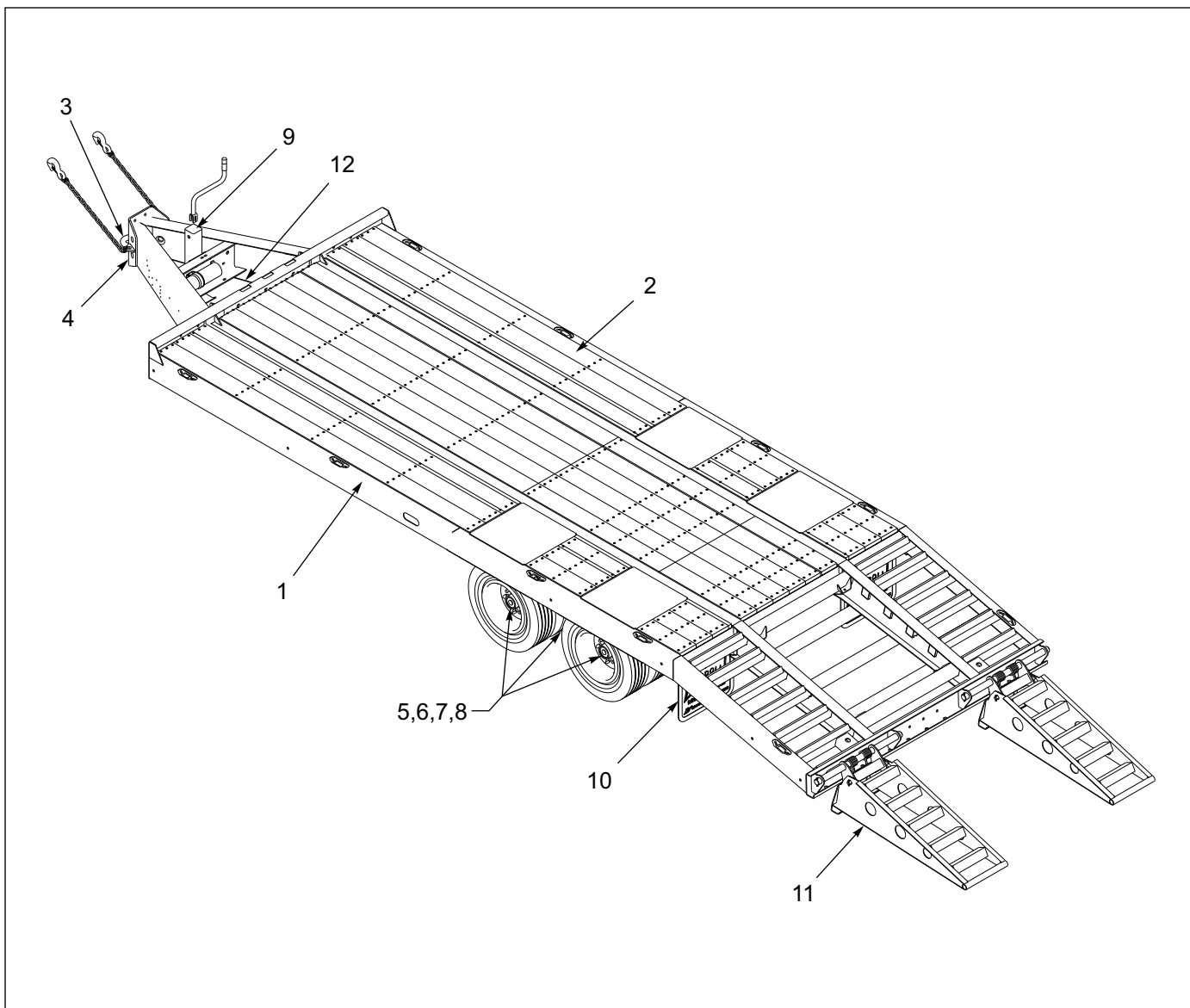


Figure 1-2: General Assembly

General Assembly

ITEM	PAGE NO.	DESCRIPTION	QTY.
1	1-4 - 1-6	DECAL INSTALLATION	
2	1-8 - 1-9	FLOOR ASSEMBLY	
3	1-10 - 1-15	HITCH ASSEMBL	
4	1-16 - 1-19	ELECTRICAL ASSEMBLIES	
5	1-20 - 1-23	AIR SYSTEM ASSEMBLIES	
6	1-24 - 1-25	SUSPENSION ASSEMBLY	
7	1-26 - 1-31	AXLE AND BRAKE ASSEMBLY	
8	1-32 - 1-33	HUB AND DRUM ASSEMBLY	
9	1-34 - 1-39	JACKSTAND/LANDING GEAR ASSEMBLIES	
10	1-40 - 1-40	MUD FLAP ASSEMBLY	
11	1-42 - 1-43	RAMP ASSEMBLIES	
12	1-44 - 1-52	MISCELLANEOUS OPTIONS	

Decals

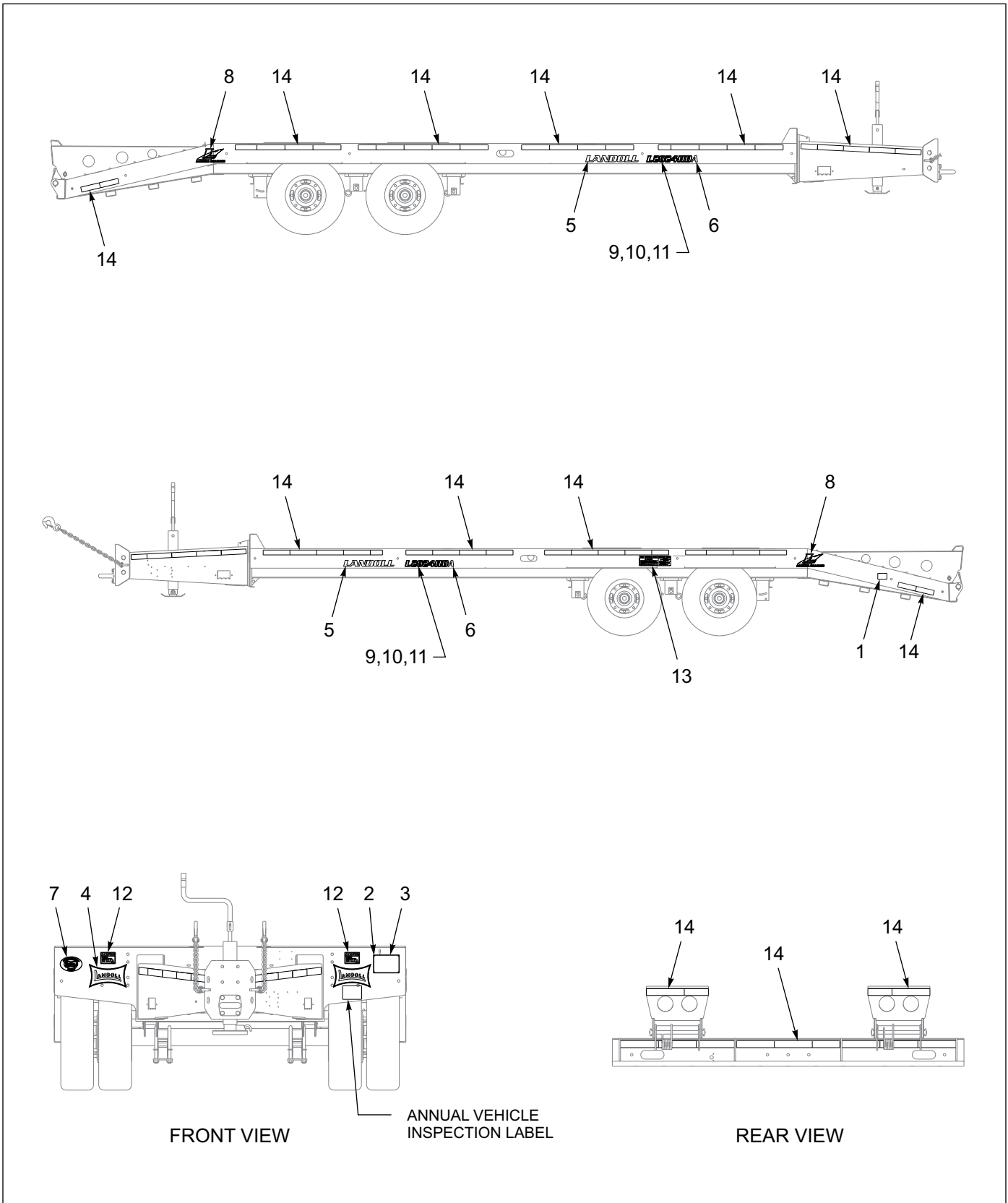


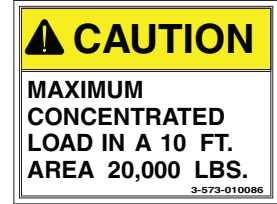
Figure 1-3: Decal Installation (1 of 2)

If the Warning Lamp Comes ON and Stays ON When You Apply the Brakes to a Moving Vehicle SERVICE THE ABS
Rockwell WABCO

1



7



12

MANUFACTURED BY / FABRIQUE PAR:		Landoll Company, LLC	
DATE: _____		1900 North Street Marysville, KS 66508 1-800-428-5655 www.landoll.com	
GVWR/PNBV: _____		TYPE/TYPE DE VEHICULE: TRA/REM	
AXLE	TIRE/PNEU	REM./JANTE	COLD INFL PRESS / PRES DE GOND. A FROID
FR/AV			
INT			
RR/AR			
SGL/DUAL: _____	VIN/NIV: _____		

THIS VEHICLE CONFORMS TO ALL APPLICABLE STANDARDS PRESCRIBED UNDER THE CANADIAN MOTOR VEHICLE SAFETY REGULATIONS IN EFFECT ON THE DATE OF MANUFACTURE.
CE VEHICULE EST CONFORME A TOUTES LES NORMES QUI LUI SONT APPLICABLES EN VERTU DU REGLEMENT SUR LA SECURITE DES VEHICULES AUTOMOBILES DU CANADA EN VIGUEUR A LA DATE DE SA FABRICATION.
THIS VEHICLE CONFORMS TO ALL APPLICABLE U.S. FEDERAL MOTOR VEHICLE SAFETY STANDARDS (FMVSS) IN EFFECT ON THE DATE OF MANUFACTURE SHOWN ABOVE.

3



8



13



4



9



14



5



10



6



11

Figure 1-4: Decal Installation (2 of 2)

Decal Installation

ITEM	PART NO.	DESCRIPTION	QTY.
	202712	DECAL INSTL, L2024A REFLECTIVE	
	202713	DECAL INSTL, L2024HDA REFLECTIVE	
	205054	DECAL INSTL, L2424A REFLECTIVE	
1	101855	WARNING LAMP LABEL,ABS	1
2	12420301-017	RIVET,BLIND .156 X 1/4 GRIP	4
3	155780	TRAILER VIN PLATE B	1
4	192208	DECAL BOWTIE 6-3/4 X 11	2
5	196167	DECAL LANDOLL SMALL	2
6	196170	DECAL LETTER A SMALL	2
7	196173	DECAL POWDERCOAT SMALL	1
8	196177	DECAL HIGHWAY L LARGE	2
9	199185	DECAL L2024 TRAILER (USED W/ 202712)	2
10	199186	DECAL L2024HD TRAILER (USED W/ 202713)	2
11	199187	DECAL L2424 TRAILER (USED W/ 205054)	2
12	3-573-010086	DECAL CONCEN LOAD 20000 LBS	2
13	3-573-010210	DECAL TORQUE SPEC 8-10STU HUB	1
14	3-573-010377	DECAL,2"REFLEXITE TAPE,RD/WHT	635

Floor Assemblies

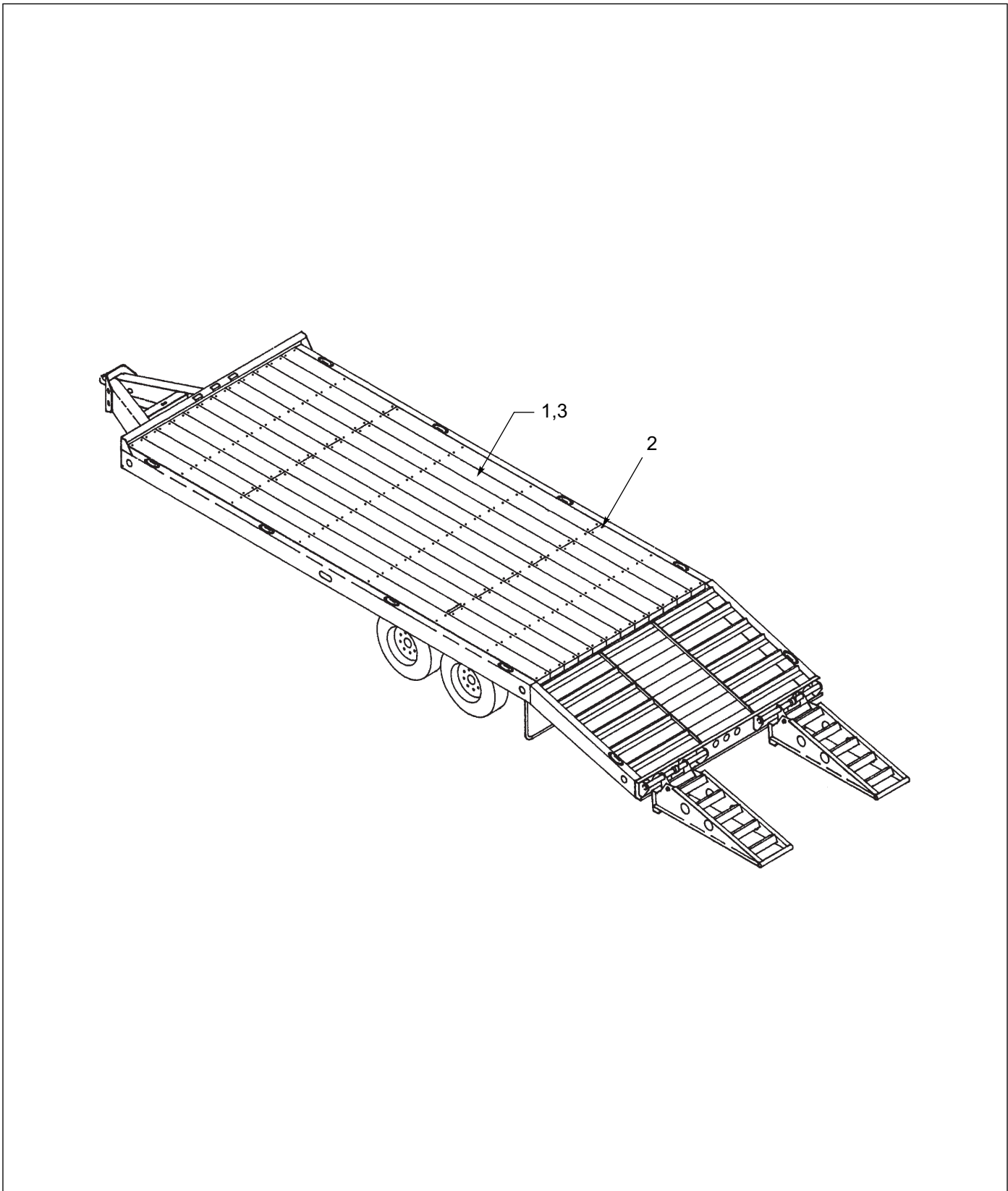


Figure 1-5: Floor Assembly

Floor Assembly

ITEM	PART NO.	DESCRIPTION	QTY.
	3-304-010078	WOOD DECK ASSY FIR	
	3-304-010079-01	FLOOR WOOD TAG APITG S/C B/C	
	3-304-010078-01	DECK ASSY,FIR L20-L24 WD B/T	
	3-304-010080-02	FLOOR WOOD APT. TAG WOOD B/T	
1	RWD39000	APITONG, 1-3/8 X 7.08	
2	3-654-010129-1	SCREW,5/16X2-1/2ZP TORX FLOOR	
3	RWD39013	FIR 2X10 NOM 20FT MIN 3.8	

Hitch Assemblies

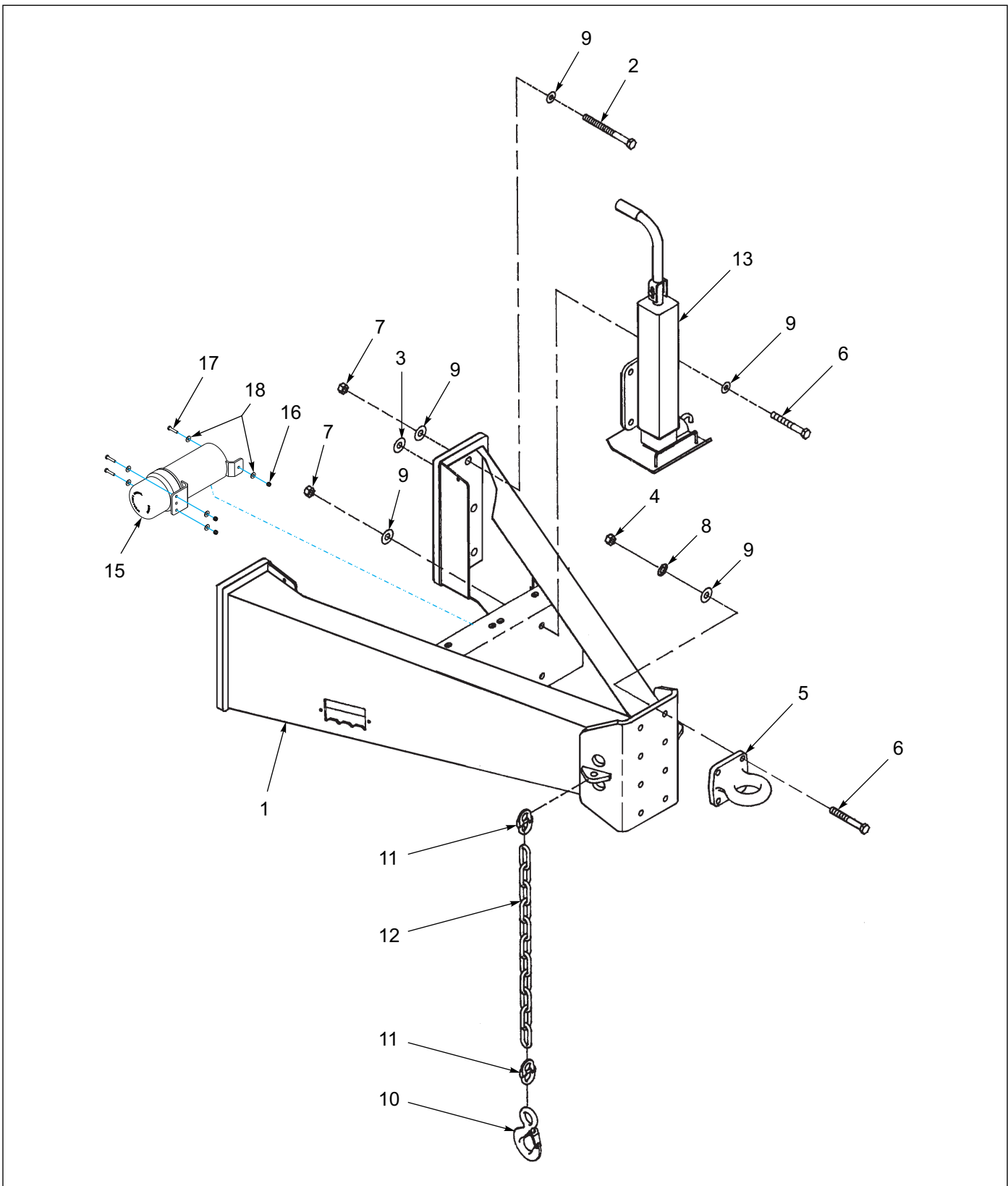


Figure 1-6: Pintle Hitch Assembly

Pintle Hitch Assembly

ITEM	PART NO.	DESCRIPTION	QTY.
	3-375-010599	HITCH ASSY L20 TAG TRL	
1	3-375-010597	HITCH WLDMT,TAG	1
2	1-654-010061-09	SCREW HX CP 3/4-10UNCX3 GR5	10
3	1-861-010032-20	WASHER, FLAT,3/4 N ZP/CD	2
4	1-512-010002-15	NUT,HEX SLFLKG 3/4-10 GRC	4
5	1385	PINTLE EYE	1
6	1-654-010061-07	SCREW,HX CP 3/4-10UNCX2-1/2G5	8
7	1-512-010005-15	NUT,HEX,SLFLKG GRB 3/4-10	14
8	1-861-010034-17	WASHER,LKG,HLCL SPR,3/4	4
9	1-861-010032-21	WASHER, FLAT 3/4 W ZP/CD	30
10	3-382-010019	HOOK,EYE, W/LATCH ASSY	2
11	3-174-010042	CHAIN LINK CONNECTING 3/8	4
12	3-174-010018036	CHAIN 3/8 HI TEST ZINC 3FT	2
13	3-423-010039	JACK WELDMENT, 12K (SEE PAGE 1-35)	1
14	F-203	MANUAL L18, L20,L24,L40 OPER (NOT SHOWN)	1
15	150076	MANUAL TUBE 4-1/4"ID)	1
16	1-512-010005-01	NUT,HEX,SLFLKG GRB 1/4-20	3
17	1-654-010047-07	SCREW,HX CP 1/4-20UNCX1-1/4G5	3
18	1-861-010032-07	WASHER,FLAT 1/4 ZP	6

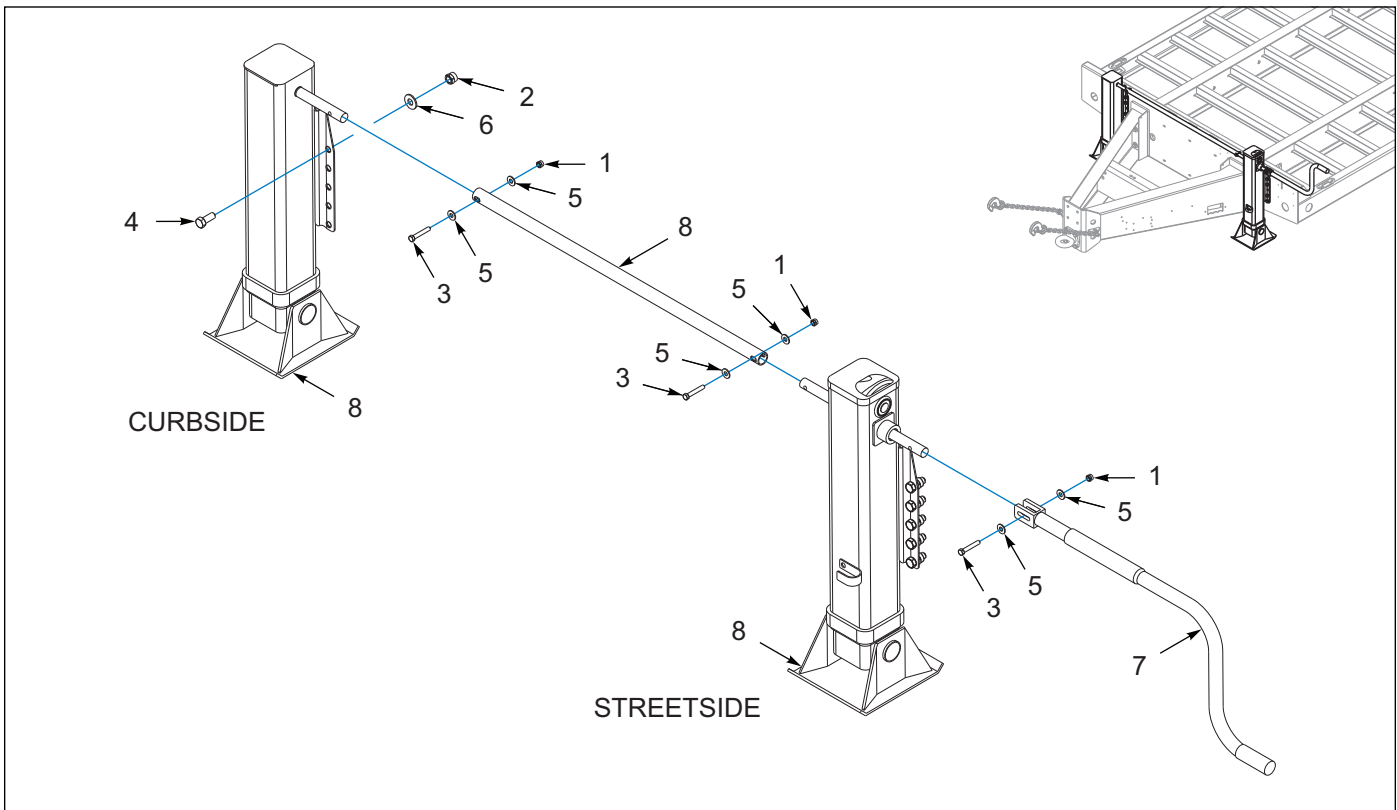


Figure 1-7: Pintle Hitch, Landing Legs, Dual, Gear, 2 Spd (OPTION)

Pintle Hitch, Landing Legs, Dual, Gear, 2 Spd (OPTION)

ITEM	PART NO.	DESCRIPTION	QTY.
	160360	LANDING GEAR INSTALL L20 (USED ON PINTLE HITCH)	--
1	1-512-010005-05	NUT, HEX, SLFLKG GRB 3/8-16	3
2	1-512-010005-13	NUT,HEX SLFLKG GRB 5/8-11	16
3	1-654-010051-10	SCREW,HX CP3/8-16X2-1/4 GR5	3
4	1-654-010059-04	SCREW,HEX CAP 5/8-11X1-3/4 G5	16
5	1-861-010032-11	WASHER, FLAT 3/8 W ZP/CD	6
6	1-861-010032-19	WASHER, FLAT 5/8 W ZP/CD	16
7	109710	CRANK #C10592-4 17-3/4	1
8	148641	CROSS-SHAFT LANDG GR MACK35T (53")	1
9	183611	LANDING GEAR WLDMT 109709 MOD (109709 MODIFIED) (COMPONENTS - SEE PAGE 1-37)	1

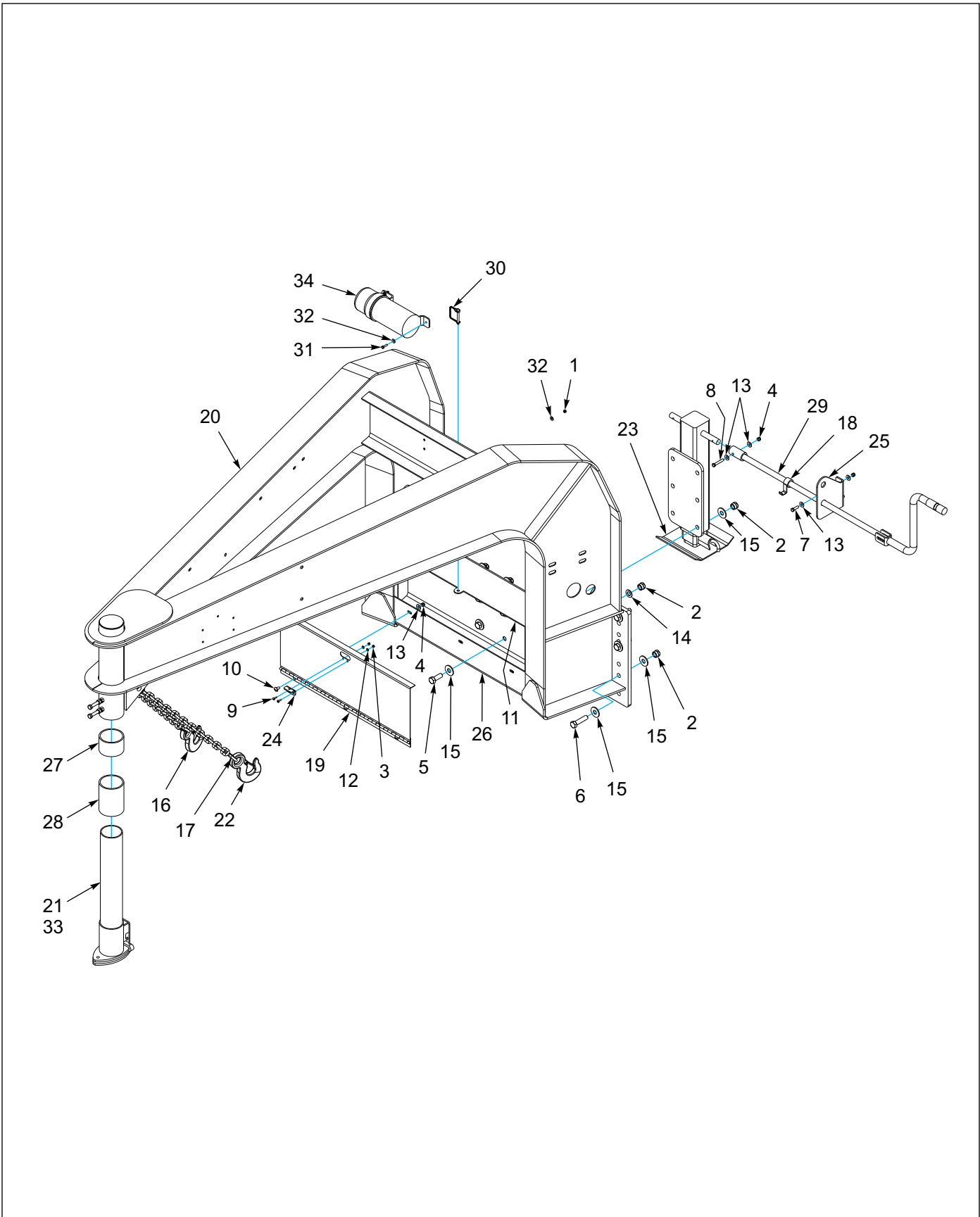


Figure 1-8: Gooseneck Hitch Assembly

Gooseneck Hitch Assembly

ITEM	PART NO.	DESCRIPTION	QTY.		
	3-375-010610-01	HITCH, G/N TAG TRL	*		
	122817	HITCH,G/N L20JR WHL	*		
	123738	HITCH G/N L20 5TH WHL	*		
1	1-512-010005-01	NUT,HEX,SLFLKG GRB 1/4-20	3	3	3
2	1-512-010002-15	NUT,HEX SLFLKG 3/4-10 GRC	16	16	16
3	1-512-010004-03	NUT,HEX,SLFLK 10-24UNC, GRA	2	2	2
4	1-512-010005-05	NUT, HEX, SLFLKG GRB 3/8-16	6	6	6
5	1-654-010032-05	SCREW HEX CAP 3/4-10X2 GR8	6	6	6
6	1-654-010032-09	SCREW HEX CAP 3/4-10X3 GR8	10	10	10
7	1-654-010051-06	SCREW,HEX CAP 3/8-16UNCX1-1/4	2	2	2
8	1-654-010051-10	SCREW,HEX CAP 3/8-16X2-1/4 GR5	1	1	1
9	1-654-010100026	SCREW,MACH SLT TR 10-24X3/4	2	2	2
10	1-654-010100071	SCREW,MACH,SLT TRH 3/8-16X3/4	3	3	3
11	1-822-010003	TRIM-LOK 1/8	1	1	1
12	1-861-010032-03	WASHER, FLAT #10 ZP/CD	2	2	2
13	1-861-010032-11	WASHER, FLAT 3/8 W ZP/CD	9	9	9
14	1-861-010032-20	WASHER, FLAT 3/4 N ZP/CD	2	2	2
15	1-861-010032-21	WASHER, FLAT 3/4 W ZP/CD	30	30	30
16	3-174-010018036	CHAIN 3/8 HI TEST ZINC 3FT	2	2	2
17	3-174-010042	CHAIN LINK CONNECTING 3/8	4	4	4
18	3-187-010019	CLIP WLDMT,JACK HANDLE	1	1	1
19	3-222-010219	COVER, WLDMT TOOLBOX G/N	1	1	1
20	3-336-010060	GOOSENECK WLDMT, L20/L20HD/L24	1	--	--
20	122816	GOOSENECK WLDMT, L20, JR 5TH WHL	--	1	--
20	123597	GOOSENECK WLDMT, L20, 5TH WHL	--	--	1
21	3-375-010609-02	HITCH INNER TUBE 2-5/16 BALL	1	--	--
22	3-382-010019	HOOK, EYE, W/LATCH ASSY	2	2	2
23	3-423-010042	JACK 1200 LB DROPLEG WLDMT (SEE PAGE 1-39)	1	1	1
24	3-443-010020	LATCH, TOOL BOX DOOR,G/N	1	1	1
25	3-565-011865	PLATE, HANDLE BRACE	29	29	29
26	3-659-010013	SEAL NEOPRENE SPONGE	1	1	1
27	3-711-010123003	SPACER,G/N HITCH TUBE, 3IN	1	1	1
28	3-711-010123006	SPACER,G/N HITCH TUBE 6IN	1	1	1
29	3-831-010178	TUBE WLDMT,HANDLE EXTENSION	1	1	1
30	516-22PTL	RETAINING PIN MUD FLAP	1	1	1
31	1-654-010047-06	SCREW,HX CP 1/4-20UNCX1 GR5	3	3	3
32	1-861-010032-07	WASHER,FLAT 1/4 ZP	6	6	6
33	123712	TUBE WLDMT, INNER 5TH WHL	--	--	1
34	150076	MANUAL TUBE 4-1/4"ID	1	1	1

Electrical System

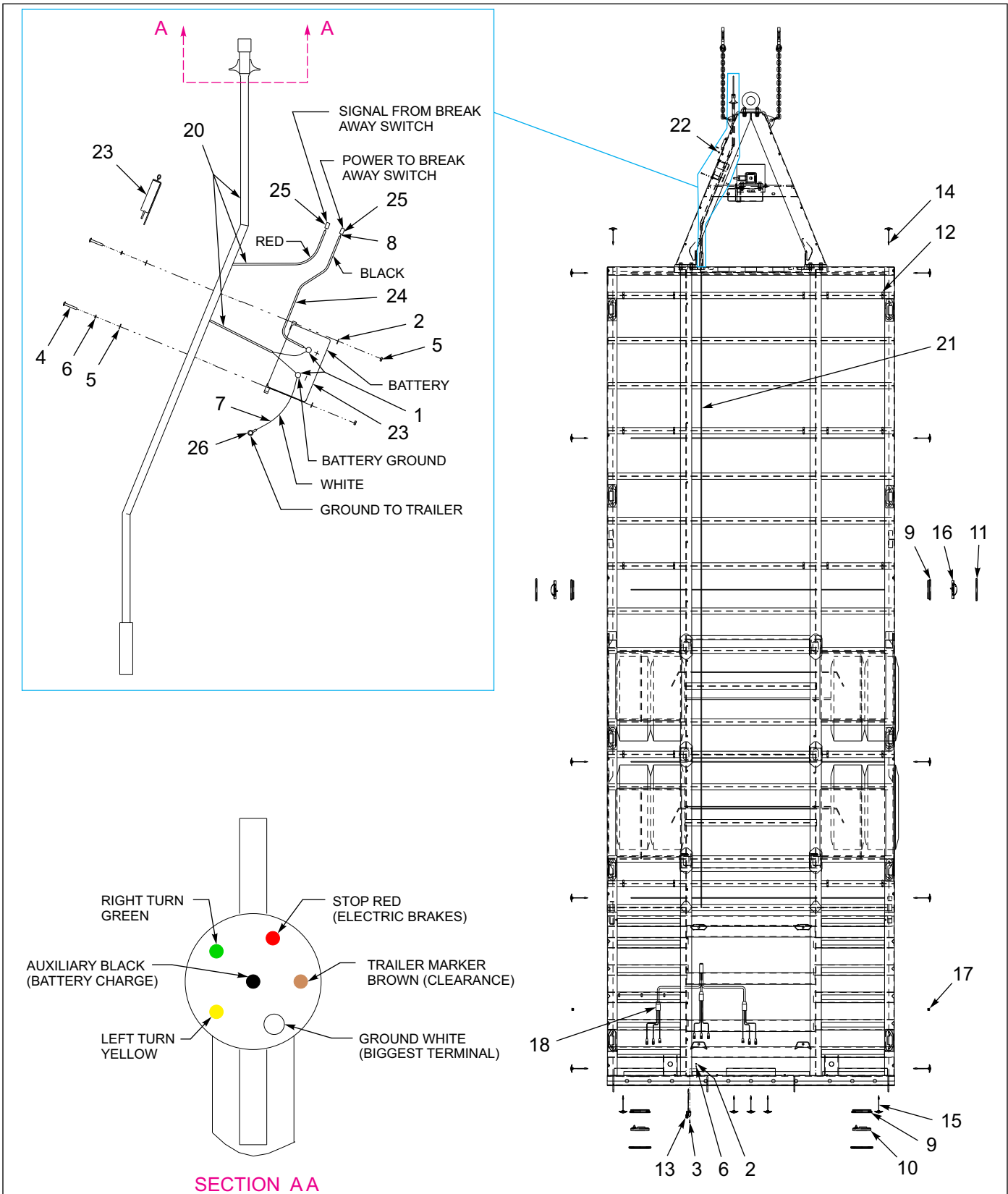


Figure 1-9: Electrical System - W/ Electric Brakes

Electrical System - W/ Electric Brakes

ITEM	PART NO.	DESCRIPTION	QTY.
	201850	ELECT ASSY, L2024HDA	
1	1-203-010040-5	CONN,INSUL FEMALE PUSH-ON	2
2	1-512-010007-03	NUT, HEX 10-24 GR2 ZP	7
3	1-656-010003051	SCREW,RH HD MACH 10-24X3/4	3
4	1-656-010003055	SCREW,RD HD MACH 10-24X1-1/4	4
5	1-861-010032-03	WASHER, FLAT #10 ZP/CD	9
6	1-861-010034-07	WASHER, LKG, HLCL SPR. #10	6
7	1-879-010010	WIRE WHITE 14 AWG	2
8	1-879-010011	WIRE BLACK 14 AWG	3
9	143114	GROMMET OVAL GROTE	4
10	179902	LIGHT S/T/T RED CLEAR LENS GRT	2
11	180570	COVER CHROME OBLONG GROMMET	4
12	187833	CLIP HARNESS, CROSS-MEMBER	23
13	187860	LIGHT ASSY LICENSE LED GROTE	1
14	187863	LIGHT YEL LED.75CL/MK CLEAR CB	12
15	187864	LIGHT RED LED.75CL/MK CLEAR CB	5
16	187868	LIGHT MID-TURN LED CLEAR LENS	2
17	189280	PLUG, PLASTIC PANEL 3/4	2
18	201604	HARNESS, TAG BED GROTE	1
19	202352	HARNESS, MARKER REAR FRM GROTE (NOT SHOWN)	1
20	202419	HARNESS, L20 MID MAIN GROTE	1
21	202420	HARNESS, L20 FRT MAIN GROTE	1
22	2552	GROMMET	1
23	3-128-010032	BRAKE,ELEC.,BRAKE-AWAY KIT	1
24	3-201-010002	CONDUIT 3/8 PLASTIC FLEX	3
25	3-272-010021	ELECT BUTT SPLICE 16-14 W/SEA	10
26	-----	TERMINAL 16-14 X 10 RING	1

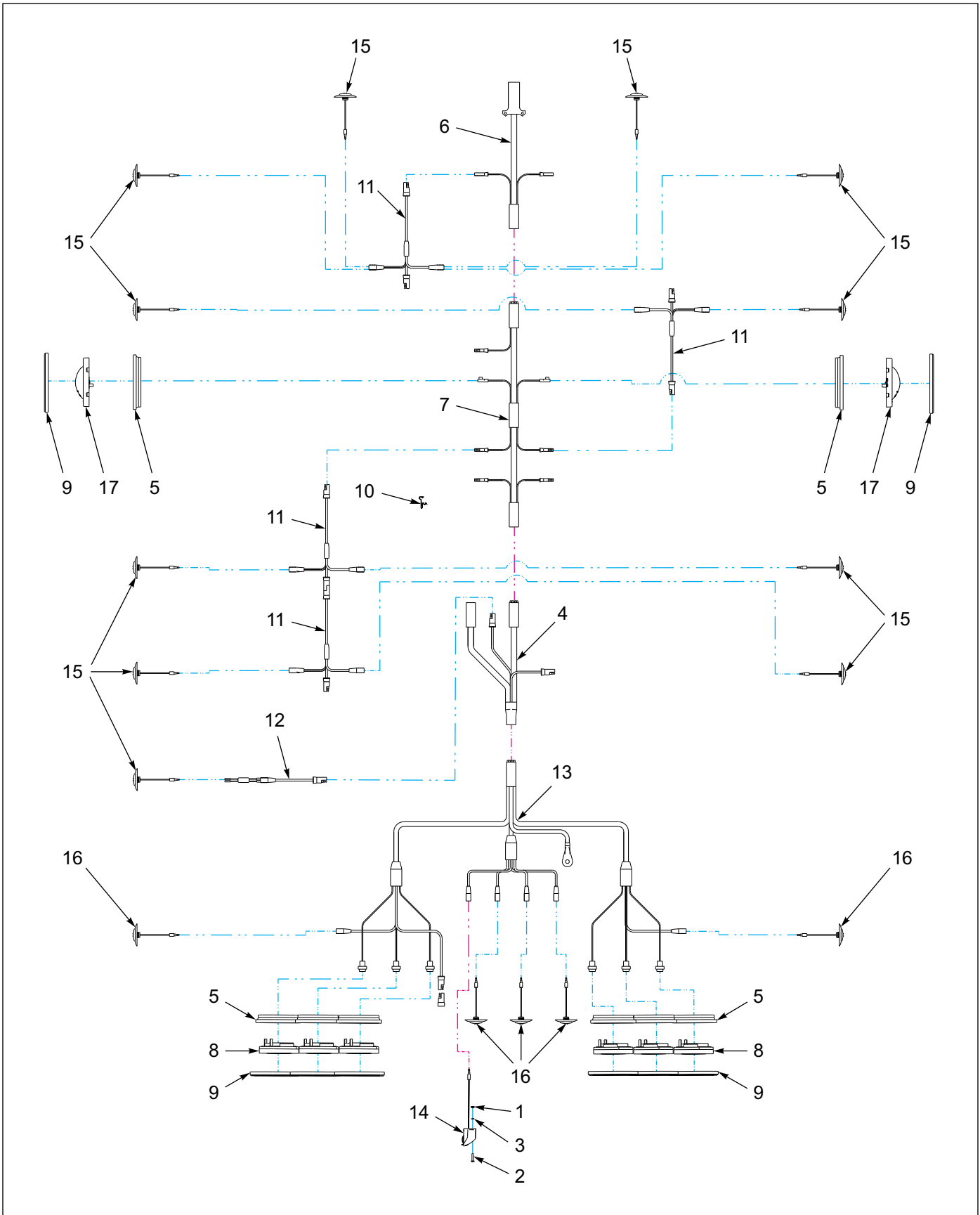


Figure 1-10: Electrical System - W/ Air Brake System

Electrical System - W/ Air Brake System

ITEM	PART NO.	DESCRIPTION	QTY.
	205045	ELECTRICAL ASSY L4024A LED	
1	1-512-010007-03	NUT, HEX 10-24 GR2 ZP	2
2	1-656-010003053	SCREW RD HD MACH 10-24X1	2
3	1-861-010034-07	WASHER,LKG,HLCL SPR, NO 10	2
4	143103	HARNESS ECHAIN GROTE	1
5	143114	GROMMET OVAL GROTE	8
6	147190	HARNESS 7WAY PLUG 345 GROTE	1
7	147191	HARNESS BED MAIN 345 GROTE	1
8	179902	LIGHT S/T/T RED CLEAR LENS GRT	6
9	180570	COVER CHROME OBLONG GROMMET	8
10	187833	CLIP HARNESS, CROSS-MEMBER	35
11	187857	HARNESS MARKER ADDITION	4
12	187858	HARNESS ABS LAMP MICRONOVA	1
13	187859	HARNESS BUMPER MICRONOVA GROTE	1
14	187860	LIGHT ASSY LICENSE LED GROTE	1
15	187863	LIGHT YEL LED.75CL/MK CLEAR CB	11
16	187864	LIGHT RED LED.75CL/MK CLEAR CB	5
17	187868	LIGHT MID-TURN LED CLEAR LENS	2

Air System & ABS Brake Kit

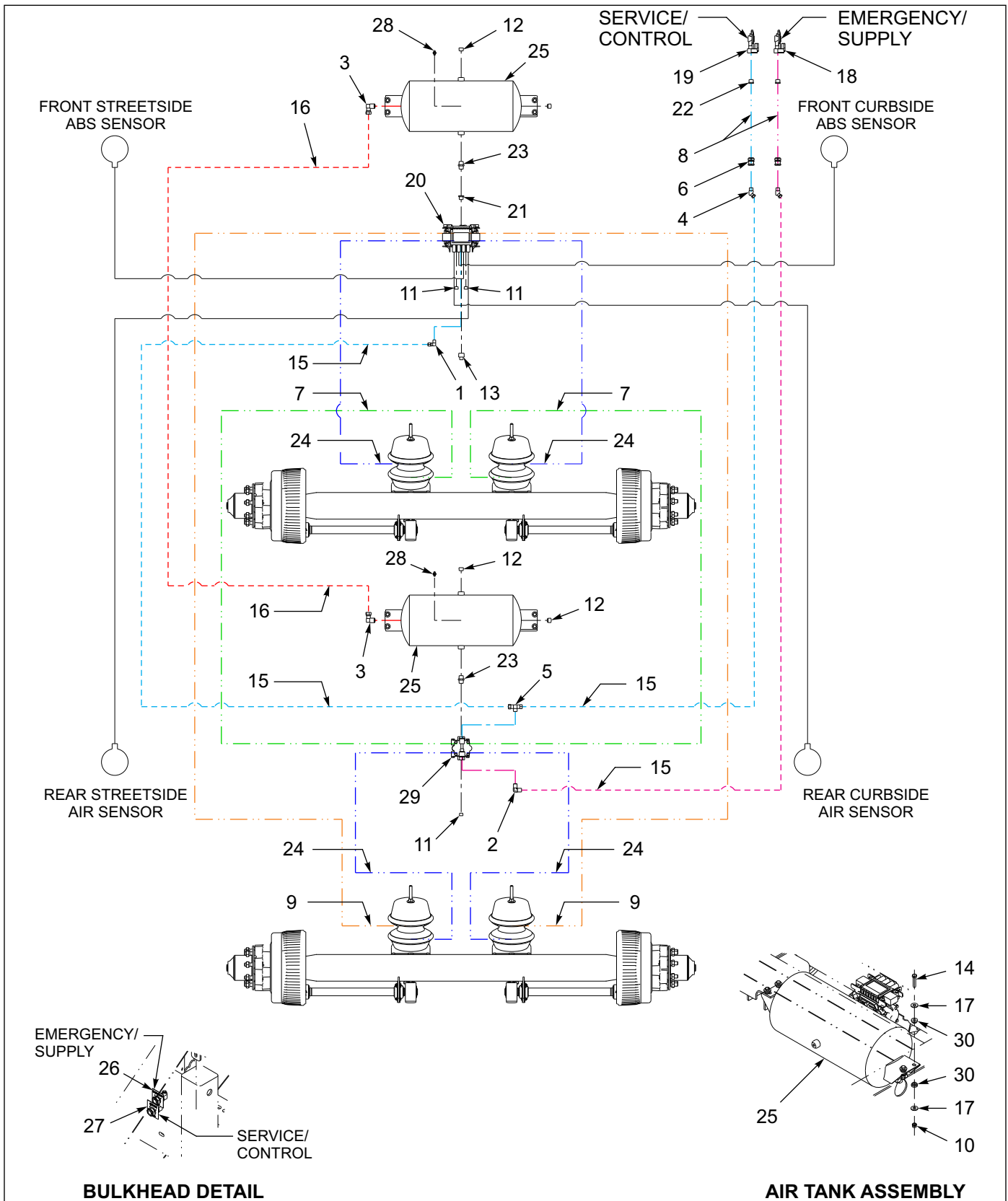


Figure 1-11: Air System W/ ABS

Air System W/ ABS

ITEM	PART NO.	DESCRIPTION	QTY.
	104393	AIR SYSTEM ABS L40 & L20	
1	1-297-010008-18	FITTING,AIR 90 3/8TUBEX1/4NPT	1
2	1-297-010008-20	FITTING,AIR 90 3/8TUBEX3/8NPT	1
3	1-297-010008-24	FITTING,AIR 90 1/2TUBEX1/2NPT	2
4	1-297-010013-12	FITTING AIR 45 M/ELB3/8TX3/8P	2
5	1-297-010015-07	FITTING,AIR,BR TEE 3/8T-3/8P	1
6	1-297-010022-03	FITTING,AIR ANCHR CPLG, 3/8NPT	2
7	1-384-010038054	HOSE ASM AIR 3/8X54,W/3/8 END	2
8	1-384-010038076	HOSE ASM AIR 3/8X76,W/3/8 END	2
9	1-384-010038084	HOSE ASM AIR 3/8X84,W/3/8 END	2
10	1-512-010005-05	NUT, HEX, SLFLKG GRB 3/8-16	8
11	1-560-010002-03	PLUG, PIPE, 3/8NPTF	3
12	1-560-010002-04	PLUG, PIPE, 1/2NPT	4
13	1-560-010002-05	PLUG,PIPE, 3/4-14NPTF	1
14	1-654-010051-08	SCREW,HEX CAP,3/8-16X1-3/4 G	8
15	1-833-010002	TUBING NYLON 3/8 OD	55
16	1-833-010003	TUBING NYLON 1/2 OD	10
17	1-861-010032-11	WASHER, FLAT 3/8 W ZP/CD	16
18	108801	GLAD HAND-RED-AIR	1
19	108802	GLAD HAND-BLUE-AIR	1
20	114586	ABS KIT WABCO 4S/2MTRI/SPREAD (SEE PAGE 1-23)	1
21	118-2659-9	BUSHING 1/2NPTX3/4NPT STL	1
22	1/2X3/8BUSH	BUSHING 1/2X3/8 BLACK IRON	2
23	2083-8-8S	NIPPLE 1/2NPTX1/2NPT	2
24	3-384-010020	HOSE AIR 3/8X32 .38NPT ENDS	4
25	3-780-010002	TANK AIR 9.5X22.5 .5NPT PORTS	2
26	55B61-6	TAG EMER LINE VELVAC 035025	1
27	55B61-7	TAG SERVICE LINE VELVC 035026	1
28	56D4	COCK,DRAIN AIR TANK VEL036019	2
29	758-181	VALVE TASK 4 PORT	1
30	805-2	BUSHINGS, STEP	16

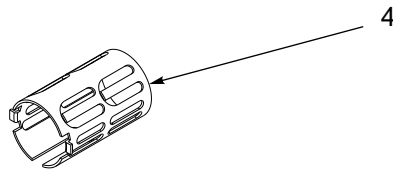
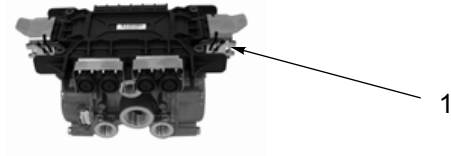


Figure 1-12: ABS Brake Kit - Rockwell

ABS Brake Kit - Rockwell

ITEM	PART NO.	DESCRIPTION	QTY.
	114586	ABS BRAKE KIT, 4S/2M-TRI/SPRD	
1	114588	ECU/VALVE ASSEMBLY	1
2	103861	SENSOR EXTENSION CABLE - 10 FT	4
3	147464	POWER/DIAGNOSTIC CABLE 4.0M/3.0M	1
4	101849	SPRING CLIP, ABS SENSOR	2

Suspension Assemblies

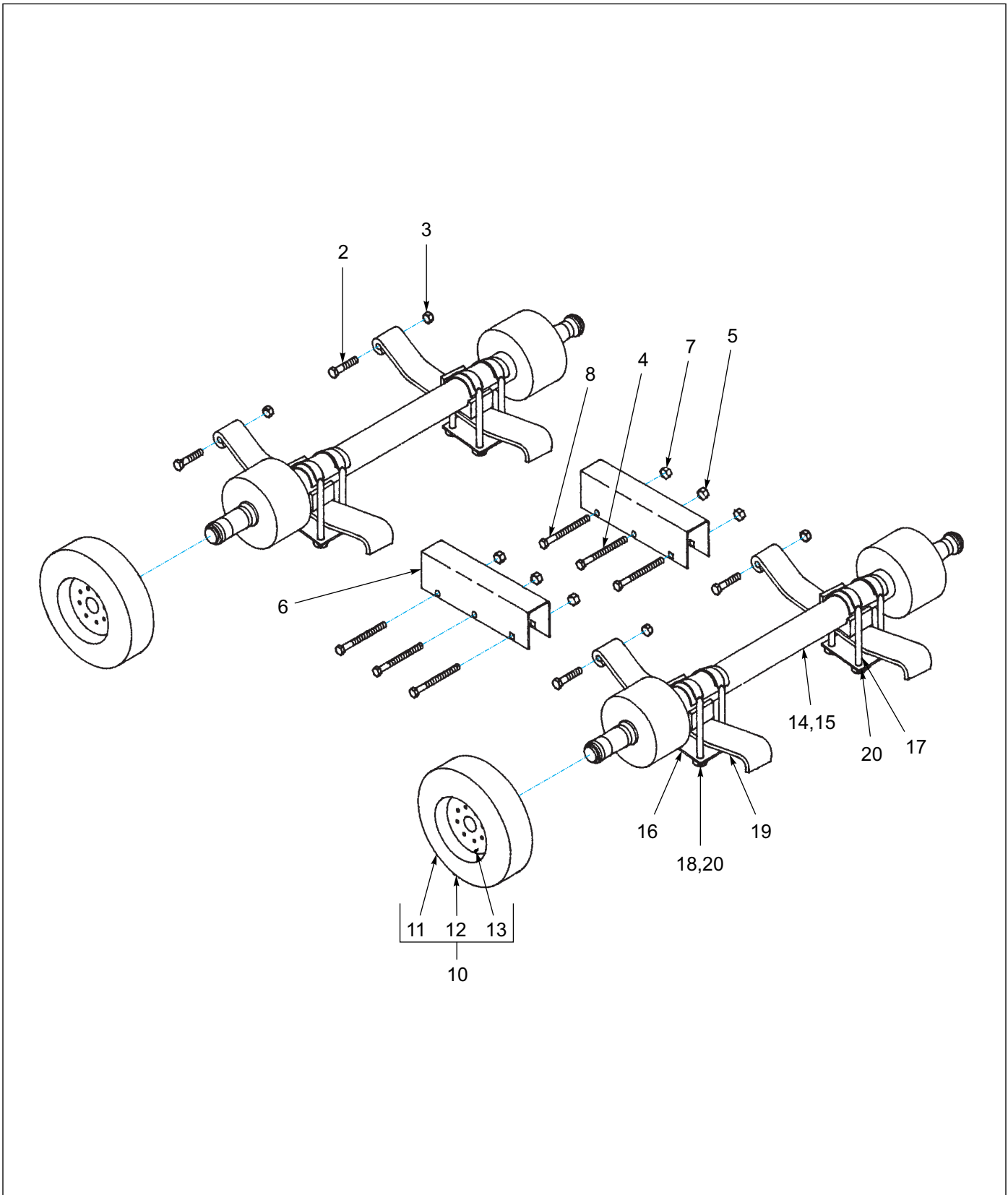


Figure 1-13: Suspension Assembly

Suspension Assembly

ITEM	PART NO.	DESCRIPTION	QTY.			
	143261	SUSP L20HD,102, ELBRK, 235/R16M	*			
	143263	SUSP L20HD,102, ALRBK, 235/R16M		*		
	143262	SUSP L2424,102, ELBRK, 235/R16M			*	
	143264	SUSP L2424,102, ALRBK, 235/R16M				*
1	3-042-010146-02	AXLE ATTACHING PARTS 12K (ITEMS 2-9)	1	1	1	1
2	-----	SPRING EYE BOLT	4	4	4	4
3	-----	LOCKNUT	4	4	4	4
4	-----	EQUALIZER BOLT	2	2	2	2
5	-----	LOCKNUT	2	2	2	2
6	-----	EQUALIZER	2	2	2	2
7	-----	LOCKNUT	4	4	4	4
8	-----	KEEPER BOLT	4	4	4	4
9	-----	DECAL (NOT SHOWN)	2	2	2	2
10	143260	TIRE & RIM 235/80R16 10K (ITEMS 11-13) (BEFORE 10/09/2020)	8	8	8	8
10	230763	TIRE ASSY 235/80R16 LRE STL SV (ITEMS 11-13) (BEFORE 10/09/2020)	8	8	8	8
11	132135	WHEEL 4-3/4 HUB PLT 16 X 6 (BEFORE 10/09/2020)	1	1	1	1
11	-----	WHEEL 4-3/4 HUB PLT 16 X 6 (AFTER 10/09/2020)	--	--	--	--
12	143237	TIRE, 235/80R16 LRE IMPORT A (BEFORE 10/09/2020)	1	1	1	1
12	-----	TIRE, 235/80R16 LRE IMPORT A (AFTER 10/09/2020)	--	--	--	--
13	TR416	VALVE STEM TUBELESS TIRE	1	1	1	1
14	125242	AXLE, 10KHD, 78 TRK, ELE BRK (ITEMS 16-20) (SEE PAGE 1-31)	2	--	--	--
14	103689	AXLE, 10KHD, 78 TRK, AIR ABS (ITEMS 16-20) (SEE PAGE 1-27)	--	2	--	--
15	140259	AXLE, 12K, 78 TRK, ELE BRK (ITEMS 16-20) (SEE PAGE 1-31)	--	--	2	--
15	103690	AXLE, 12K, 78 TRK, AIR ABS (ITEMS 16-20) (SEE PAGE 1-27)	--	--	--	2
16	139281	TIE PLATE	2	2	--	--
16	131064	TIE PLATE	--	--	2	2
17	139282	U-BOLT	4	4	--	--
17	131063	U-BOLT	--	--	4	4
18	139283	U-BOLT NUT	8	8	--	--
18	131062	U-BOLT NUT	--	--	8	8
19	139285	SPRING/BUSHING	2	2	--	--
19	139286	SPRING/BUSHING	--	--	2	2
20	139284	U-BOLT WASHER	8	8	8	8

Axle & Brake Assemblies

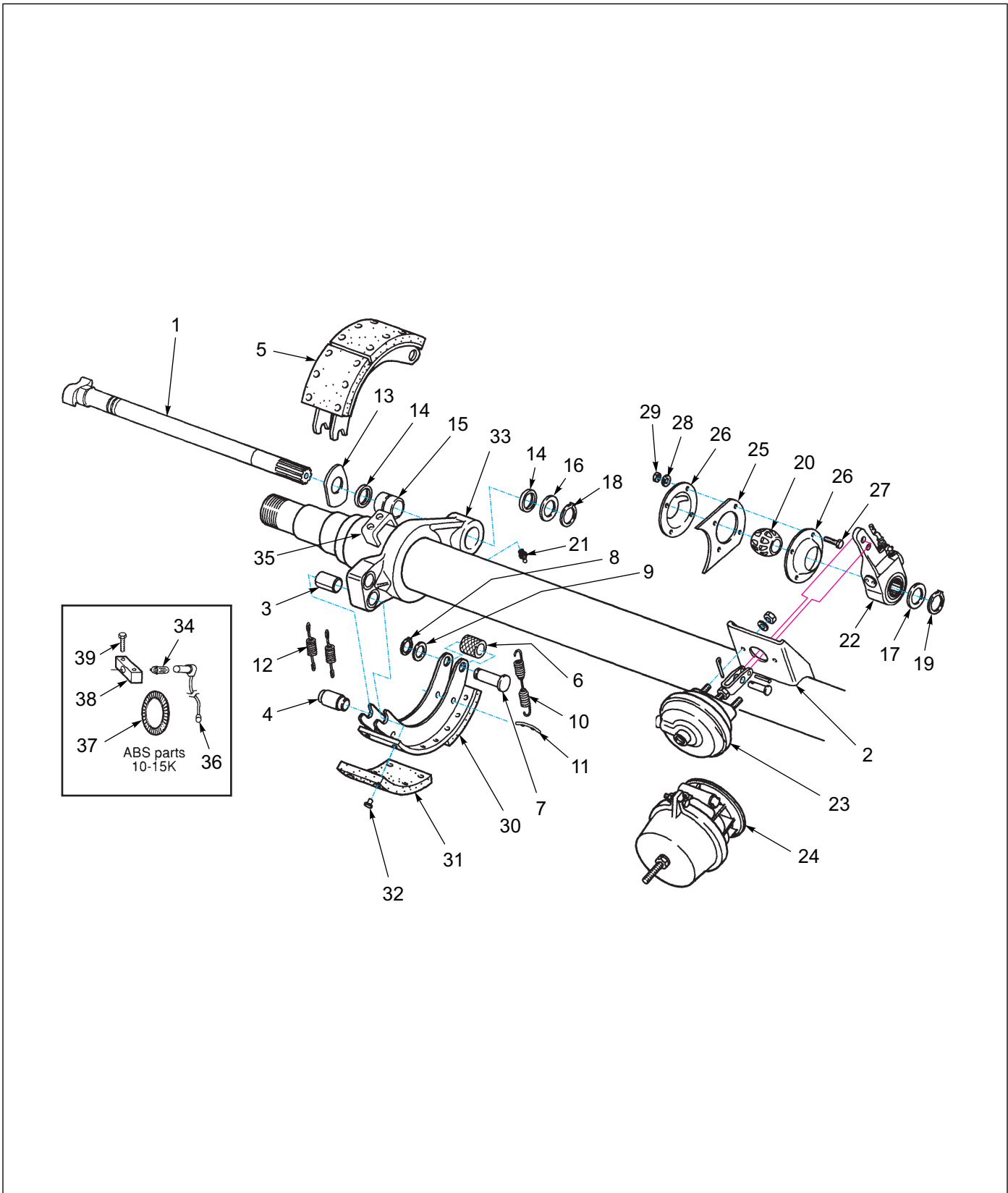


Figure 1-14: Air Brake - 10K HD & 12K

Air Brake - 10K HD & 12K

ITEM	PART NO.	DESCRIPTION	QTY.
	103689	AXLE, 10KHD, 78 TRK, AIR ABS	
	103690	AXLE, 12K, 78 TRK, AIR ABS	
	K71-460-00	BRAKE SHOE HARDWARE KIT (ITEMS 3, 4, & 6-12)	1
	K71-101-00	CAMSHAFT REPAIR KIT (ITEMS 13-21)	1
	113822	BRAKE BLOCK KIT - (USED W 103689) (ITEMS 30-32)	1
	144978	BRAKE BLOCK KIT - (USED W/ 103690) (ITEMS 30-32)	1
1	034-188-03	CAMSHAFT LH	1
1	034-189-03	CAMSHAFT RH	1
2	034-048-00	AIR CHAMBER BRACKET	1
3	-----	BUSHING-SPIDER ANCHOR PIN	2
4	-----	ANCHOR PIN	2
5	144973	SHOE AND LINING ASSEMBLY (USED W 103689)	2
5	144974	SHOE AND LINING ASSEMBLY (USED W/ 103690)	2
6	-----	ROLLER	1
7	-----	ROLLER PIN	2
8	-----	ROLLER PIN RETAINER	2
9	-----	ROLLER PIN SPACER (ONLY USED W/ 103689)	2
10	-----	RETRACTOR SPRING	1
11	056-018-00	RETAINER PIN	2
12	046-097-00	SHOE KEEPER SPRING	2
13	005-074-00	"D" WASHER, CAMSHAFT	1
14	010-052-00	GREASE SEAL	2
15	014-056-00	CAMSHAFT BUSHING	1
16	005-075-00	WASHER, CAMSHAFT SPIDER END	7
17	113819	CAMSHAFT WASHER, 28 SPLINE	7
18	069-020-00	RETAINER, CAMSHAFT	1
19	069-078-00	RETAINER, CAMSHAFT END	1
20	014-058-00	CAMSHAFT SUPPORT BUSHING	1
21	113820	GREASE FITTING	1
22	-----	AUTOMATIC SLACK ADJUSTER, 28 SPLINE	1
23	144975	AIR CHAMBER W/ HARDWARE (USED W 103689)	1
23	144976	AIR CHAMBER W/ HARDWARE (USED W/ 103690)	1
24	113823	AIR CHAMBER W/ SPRING BRAKE (USED W 103689)	1
24	144977	AIR CHAMBER W/ SPRING BRAKE (USED W/ 103690)	1
25	034-031-00	PLATE, CAMSHAFT SUPPORT BRACKET	1
26	034-032-00	PLATE, BUSHING RETAINER	2
27	007-139-00	BOLT, RETAINER PLATE	4
28	005-079-00	LOCK WASHER	4
29	-----	NUT	4
30	-----	BRAKE BLOCK CAM	2
31	-----	BRAKE BLOCK ANCHOR	2
32	-----	RIVET	24

Air Brake - 10K HD & 12K

ITEM	PART NO.	DESCRIPTION	QTY.
33	113821	BRAKE SPIDER	1
34	144979	ABS SENSOR RETAINING CLIP	1
35	144980	ABS LOWER SENSOR MOUNTING BLOCK	1
36	128550	ABS SENSOR 90°	1
37	144981	ABS TONE RING IN DRUM	1
38	141931	ABS UPPER SENSOR MOUNTING BLOCK	1
39	144982	MOUNTING SCREW UPPER BLOCK	2

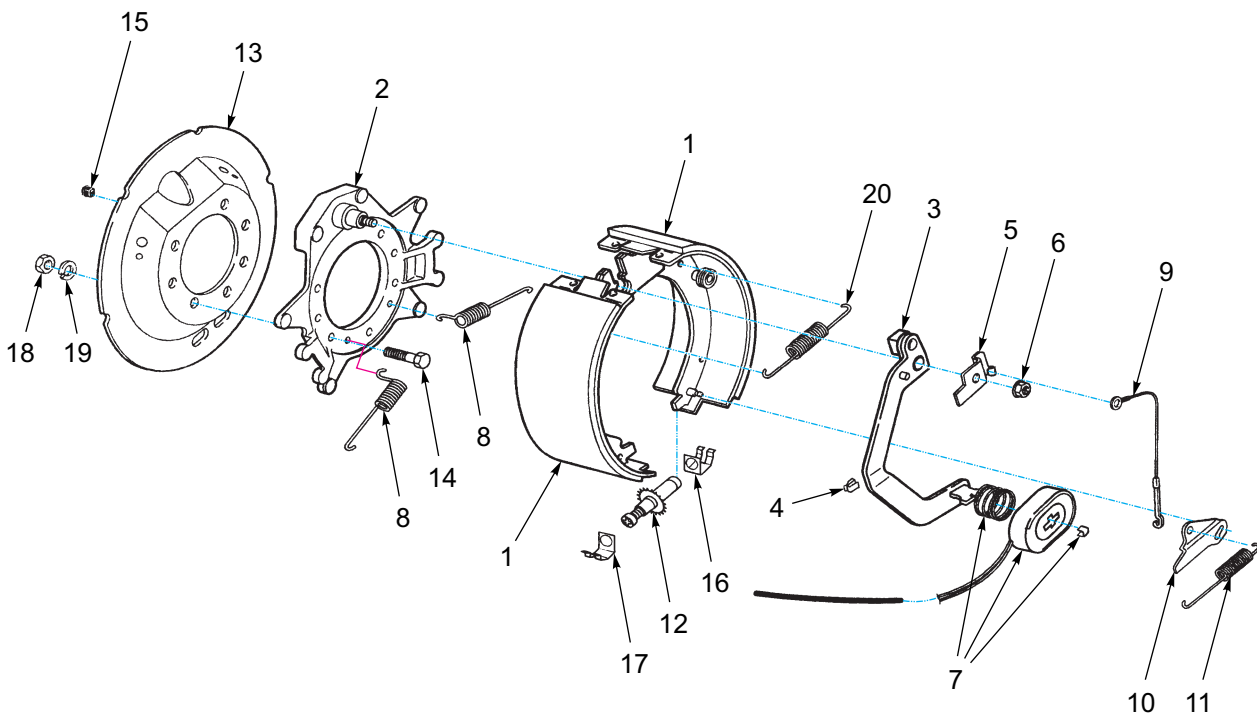


Figure 1-15: Electric Brake - 10K HD & 12K

Electric Brake - 10K HD & 12K

ITEM	PART NO.	DESCRIPTION	QTY.	
	125242	AXLE, 10K HD, 78 TRK, ELE BRK	*	
	140259	AXLE, 12K, 78 TRK, ELE BRK		*
1	144983	LH SHOE & LINING KIT	1	--
1	144984	LH SHOE & LINING KIT	--	1
	-----	LH PRIMARY (INCLUDED IN 144983 & 144984)	1	1
	-----	LH SECONDARY (INCLUDED IN 144983 & 144984)	1	1
1	144985	RH SHOE & LINING KIT	1	--
1	145011	RH SHOE & LINING KIT	--	1
	-----	RH PRIMARY (INCLUDED IN 144985 & 145011)	1	1
	-----	RH SECONDARY (INCLUDED IN 144985 & 145011)	1	1
2	144986	BACKING PLATE ASSEMBLY	1	1
3	144987	LH ACTUATING ARM ASSEMBLY	1	--
3	144988	LH ACTUATING ARM ASSEMBLY	--	1
3	144989	RH ACTUATING ARM ASSEMBLY	1	--
3	144990	RH ACTUATING ARM ASSEMBLY	--	1
4	144991	WIRE CLIPS	3	3
5	144992	LH ARM/SHOE RETAINER	1	1
5	144993	RH ARM/SHOE RETAINER	1	1
6	111933	FLANGE NUT	1	1
7	101410	MAGNET KIT	1	--
7	101416	MAGNET KIT	--	1
	-----	MAGNET ASSEMBLY (INCLUDED IN 101410 & 101416)	1	1
	-----	MAGNET RETAINER CLIP (INCLUDED IN 101410 & 101416)	1	1
	-----	MAGNET SPRING (INCLUDED IN 101410 & 101416)	1	1
8	144994	CENTERING SPRING	2	2
9	144995	ADJUSTER CABLE	1	1
10	144996	LH ADJUSTER LEVER	1	1
10	144997	RH ADJUSTER LEVER	1	1
11	144998	ADJUSTER SPRING	1	1
12	144999	LH ADJUSTER ASSEMBLY	1	1
12	145000	RH ADJUSTER ASSEMBLY	1	1
13	145001	DUST SHIELD	1	--
13	145002	DUST SHIELD	--	1
14	111934	BRAKE MOUNTING SCREW	7	7
15	145003	WIRE GROMMET	1	1
16	145004	ADJUSTER CLIP, THREAD END	1	1
17	145005	ADJUSTER CLIP, BARREL END	1	1
18	145006	BRAKE MOUNTING NUT	7	7
19	145007	BRAKE MOUNTING LOCKWASHER	7	7
20	145008	RETURN SPRING	1	1

NOTE: ITEM 1 (AXLE BEAMS) HAVE NO VENDOR PART NUMBERS.
THEY ARE BOUGHT PER THE FOLLOWING DESCRIPTIONS:

- L20HD - 10K HEAVY DUTY AXLE, 78" TRACK, 46" SPRING CENTER, 48-1/2" AXLE SPACING, 12-1/4" X 4" AIR BRAKE.
- L20HD - 10K, 78" TRACK, 46" SPRING CENTER, 48-1/2" AXLE SPACING, 12-1/4" X 4" ELECTRIC BRAKE.
- L24 - 12K AXLE, 78" TRACK, 46" SPRING CENTER, 48-1/2" AXLE SPACING, 12-1/4" X 5" AIR BRAKE.
- L24 - 12K AXLE, 78" TRACK, 46" SPRING CENTER, 48-1/2" AXLE SPACING, 12-1/4" X 5" ELECTRIC BRAKE.

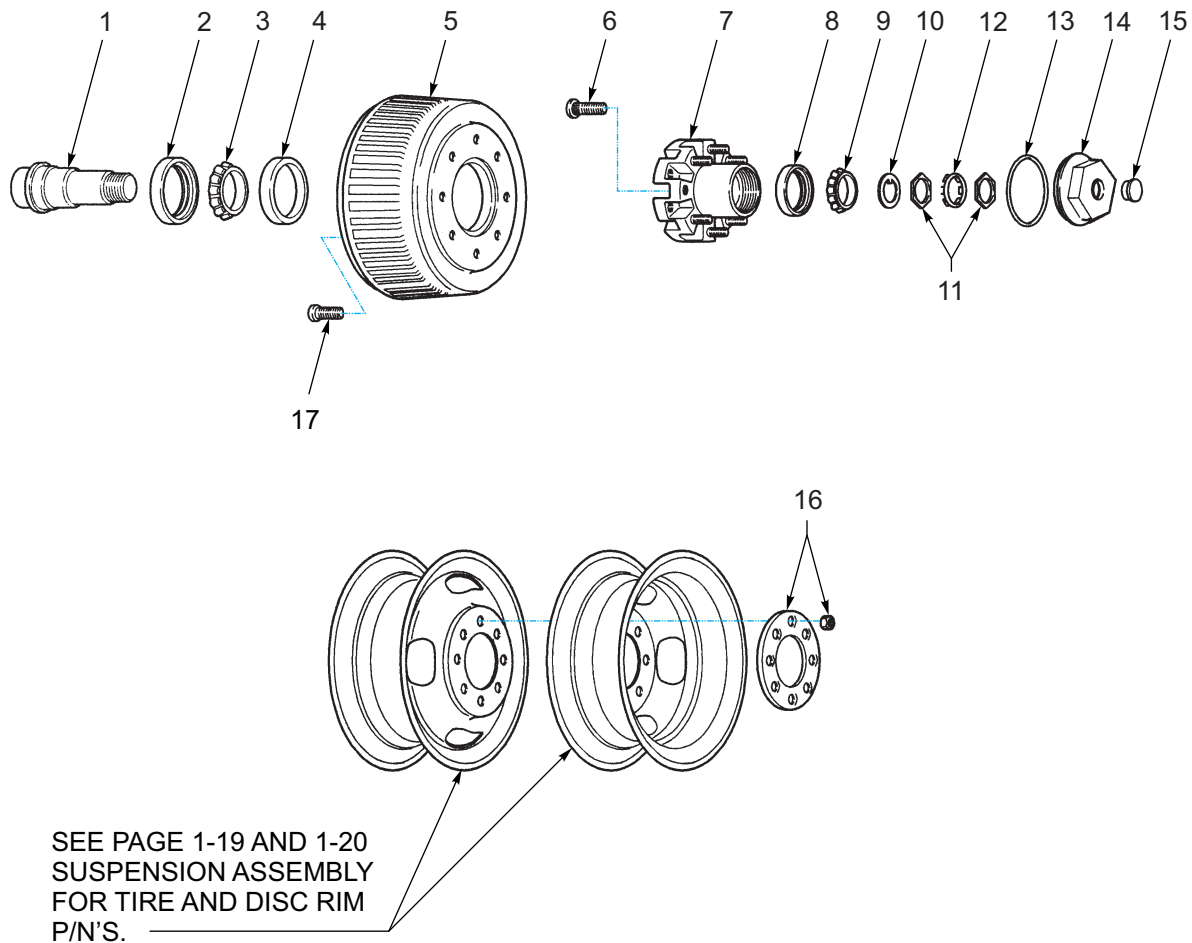


Figure 1-16: Hub & Drum Assembly - 10K HD & 12K

Hub & Drum Assembly - 10K HD & 12K

ITEM	PART NO.	DESCRIPTION	QTY.	
1	----	AXLE BEAM (10K HD)	1	--
1	----	AXLE BEAM (12K)	--	1
2	111952	UNITIZED OIL SEAL	1	1
3	111953	INNER BEARING CONE	1	--
3	111954	INNER BEARING CONE	--	1
4	111955	INNER BEARING CUP	1	--
4	111956	INNER BEARING CUP	--	1
5	145009	BRAKE DRUM, ABS	1	--
5	145010	BRAKE DRUM, ABS	--	1
6	111959	WHEEL MOUNTING STUD	8	8
7	111960	HUBS W/CUPS & STUDS	1	--
7	111961	HUBS W/CUPS & STUDS	--	1
8	111962	OUTER BEARING CUP	1	--
8	111963	OUTER BEARING CUP	--	1
9	111964	OUTER BEARING CONE	1	--
9	111965	OUTER BEARING CONE	--	1
10	111966	SPINDLE WASHER	1	1
11	111967	SPINDLE NUT	2	2
12	111968	TANG WASHER	1	1
13	113835	OIL CAP O-RING	1	1
14	111948	OIL CAP	1	1
15	152636	OIL CAP PLUG	1	1
16	113838	WHEEL CLAMP RING	1	1
16	113840	WHEEL NUT	8	8
17	131070	DRUM MTG SCREW	1	1

Landing Leg Assemblies

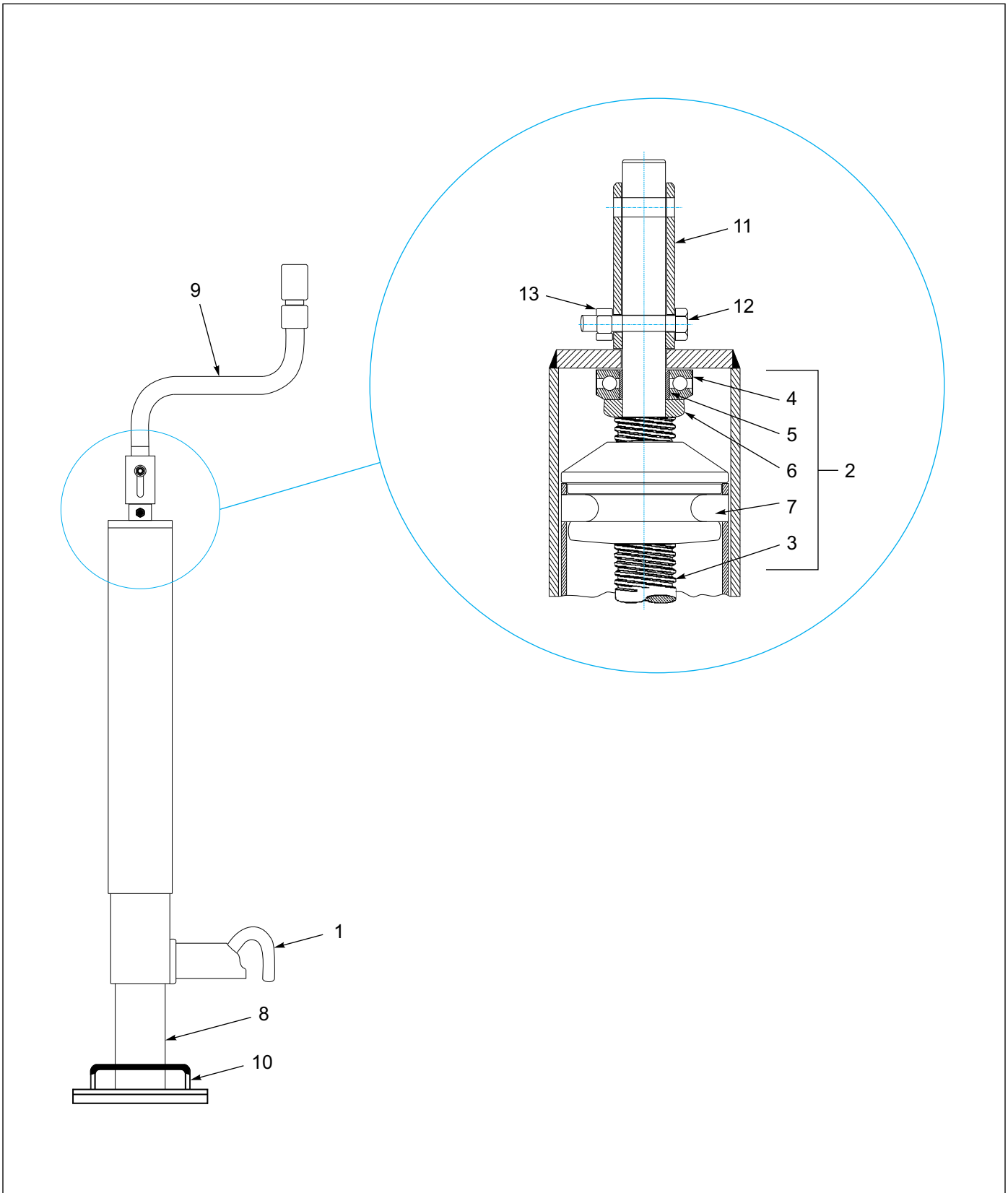
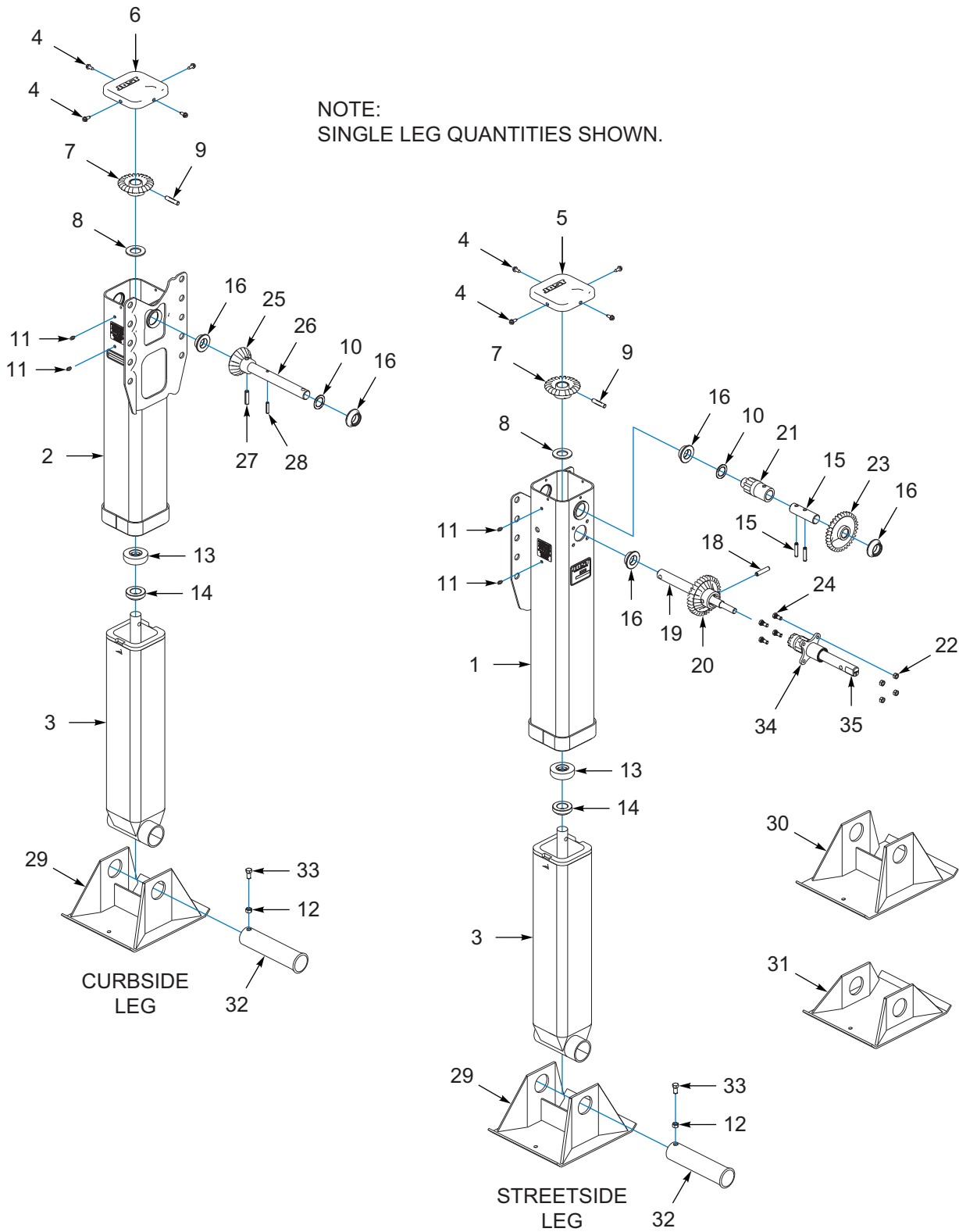


Figure 1-17: Landing Leg Components, Pintle Hitch, Drop Leg

Landing Leg Components, Pintle Hitch, Drop Leg

ITEM	PART NO.	DESCRIPTION	QTY.
	3-423-010038	JACK,12K,DROPLEG, TOP-WIND,W/G	
1	500177	PLUNGER KIT FOR JACK STD ASSY	1
2	500220	SCREW, NUT, AND BEARING KIT (INCLUDES ITEMS 3-7)	1
3	-----	SCREW AND NUT ASSEMBLY	1
4	-----	2.015" O.D. BEARING	1
5	-----	SPLIT BUSHING	1
6	-----	BEARING SEAT	1
7	-----	RETAINING PIN	2
8	-----	INNER RAM AND STANDARD DROP LEG ASSEMBLY (INCLUDES DROP LEG W/ BASE AND LIFT HANDLE, INNER RAM W/ NEW CAM-LOCK HSNB, AND "J" PIN)	1
9	-----	CRANK ASSEMBLY, HARDWARE INCLUDED	1
	-----	CRANK HANDLE (INCLUDED IN 800075)	1
	-----	3/8" X 2-1/2" PLATED HEX BOLT (INCLUDED IN 800075)	1
	-----	3/8" PLATED LOCKNUT (INCLUDED IN 800075)	1
	-----	3/8" PLATED WASHER (INCLUDED IN 800075)	2
10	-----	BASE PLATE LIFT HANDLE	1
11	-----	LONG END COLLAR	1
12	-----	3/8" X 2 PLATED HEX BOLT	1
13	-----	3/8" PLATED LOCKNUT	1



Landing Leg Components, Pintle Hitch, Dual, Gear, 2 Spd (OPTION)

ITEM	PART NO.	DESCRIPTION	QTY.
	109709	2-SP LANDING GEAR JOST (17" TRAVEL, SHOE 10 X 10 X 4-1/2)	--
1	-----	UPPER HOUSING, 2 SPEED (17" STREETSIDE)	1
2	-----	UPPER HOUSING, 1 SPEED (17" CURBSIDE)	1
3	165766	INNER LANDING LEG (17" LOWER LEG ASSEMBLY)	1
4	-----	COVER SCREW	4
5	-----	COVER, 2 SPEED (STREETSIDE)	1
6	-----	COVER, 1 SPEED (CURBSIDE)	1
7	-----	BEVEL GEAR	1
8	-----	THRUST WASHER	1
9	-----	GROOVED PIN	1
10	-----	SPACER WASHER	1
11	-----	GREASE FITTING	2
12	A10038.7	SELF LOCKING NUT	1
13	-----	THRUST WASHER	1
14	-----	COLLAR	1
15	-----	OUTPUT SHAFT	1
16	-----	BUSHING (STREETSIDE REQ 3 EACH) (CURBSIDE REQ 2 EACH)	--
17	-----	SPIRAL PIN	2
18	-----	ROLL PIN 3/8 X 1-3/4	1
19	-----	OUTPUT CLUSTER SHAFT	1
20	-----	OUTPUT CLUSTER SHAFT GEAR	1
21	-----	OUTPUT SPUR GEAR	1
22	-----	SELF LOCKING NUT	4
23	-----	INPUT SPUR GEAR	1
24	-----	SHIFT HOUSING BOLT	4
25	-----	PINION GEAR, 1 SPEED	1
26	-----	PINION SHAFT, 1 SPEED	1
27	-----	ROLL PIN 3/8 X 1-1/2	1
28	-----	ROLL PIN 1/4 X 1-1/4	1
29	114529	JOST C10035 SHOE FOR 109709 (10 X 10 X 4-1/2)	1
30	C10256	SAND SHOE (10 X 12 X 4-1/2)	1
31	204228	SAND SHOE 10X10X2 (129198) (10 X 10 X 2)	1
32	114983	SHOE AXLE B10036 FOR 109709 (PIN)	1
33	A10037.3	HEX HEAD BOLT	2
34	163502	SHAFT HOUSING SERVICE KIT (KIT INCLUDES ITEMS 34-36)	1
35	207360	SHIFT HOUSING SERVICE KIT (KIT INCLUDES ITEMS 34-37)	1
36	-----	DETENT SPRING (INCLUDED WITH ITEMS 26-27, NOT SHOWN)	1
37	-----	DETENT BALL (INCLUDED WITH ITEMS 26-27, NOT SHOWN)	2
38	-----	SHIFT HOUSING (INCLUDED WITH ITEMS 26-27, NOT SHOWN)	1
39	-----	INPUT GEAR SHAFT (INCLUDED WITH ITEM 27, NOT SHOWN)	1

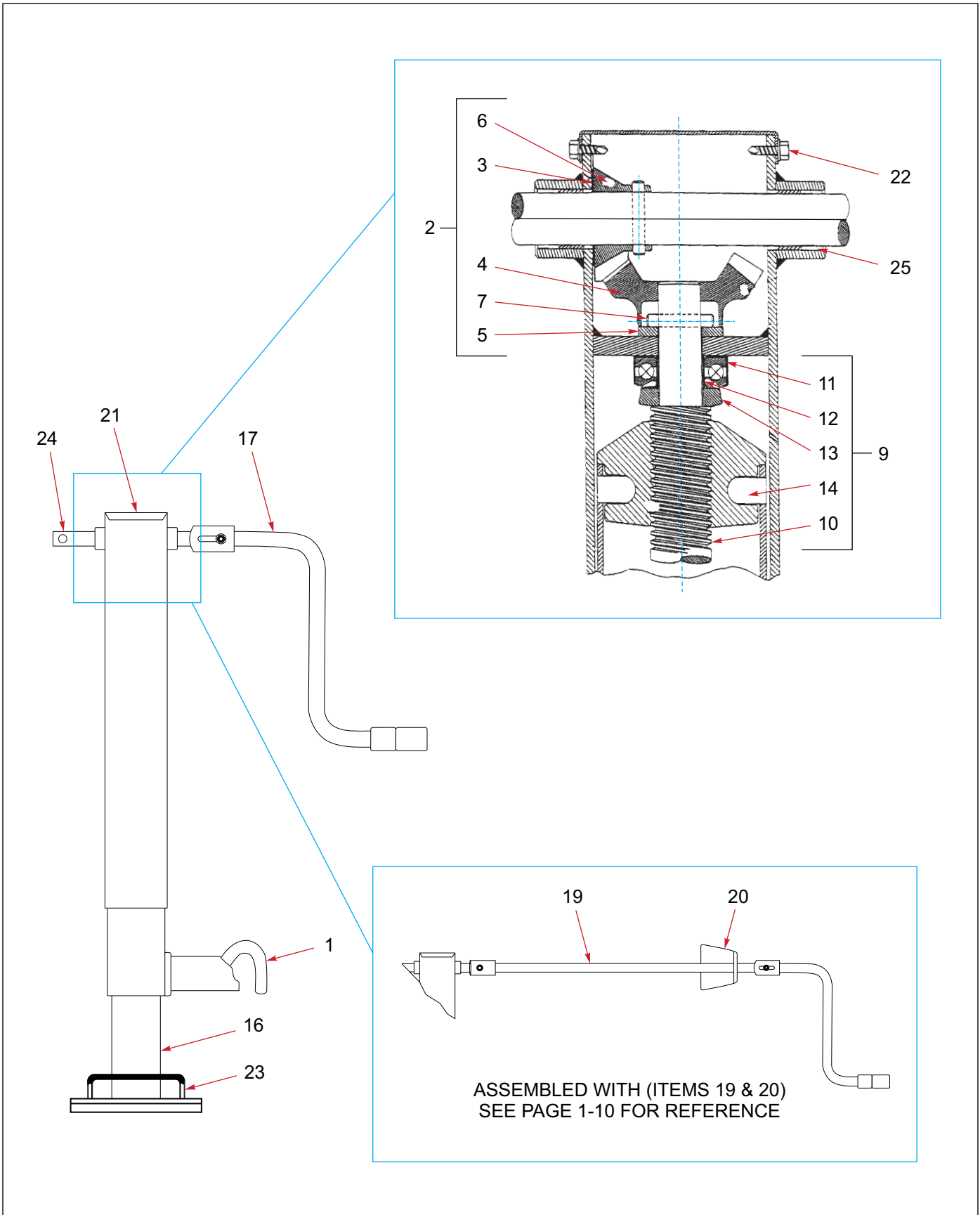


Figure 1-19: Landing Leg Components, Gooseneck, Drop Leg

Landing Leg Components, Gooseneck, Drop Leg

ITEM	PART NO.	DESCRIPTION	QTY.
	3-423-010035	JACK 12K DROPLEG W/ CRANK	
1	500177	PLUNGER KIT FOR JACK STD ASSY	1
2	-----	GEAR KIT, STYLE III JACKS (INCLUDES ITEMS 3-8)	1
3	-----	WEAR PLATE 22 GAUGE	1
4	-----	BEVEL GEAR LARGE 18TH TEETH	1
5	-----	WEAR PLATE 7 GAUGE	1
6	-----	BEVEL PINION GEAR SMALL 12 TEETH	1
7	-----	1/4 X 1-1/2" GROOVE PIN	2
8	-----	SERVICE BULLETIN (NOT SHOWN)	1
9	-----	SCREW AND NUT REPLACEMENT KIT (INCLUDES ITEMS 10-15)	1
10	-----	SCREW AND NUT ASSEMBLY	1
11	-----	2.015" O.D. BEARING	1
12	-----	SPLIT BUSHING	1
13	-----	BEARING SEAT	1
14	-----	RETAINING PIN	2
15	-----	SERVICE BULLETIN (NOT SHOWN)	1
16	-----	INNER RAM AND STANDARD DROP LEG ASSEMBLY (INCLUDES DROP LEG W/ BASE AND LIFT HANDLE, INNER RAM W/ NEW CAM-LOCK HSNQ, AND "J" PIN)	1
17	-----	CRANK ASSEMBLY FOR SIDEWIND DROP LEG ASSEMBLY	1
	-----	CRANK HANDLE NARROW VERT CLEVIS W/ RD CORNER (INCLUDED IN 015181)	1
	-----	3/8" X 2-1/2" PLATED HEX BOLT (INCLUDED IN 015181)	1
	-----	3/8" PLATED LOCKNUT (INCLUDED IN 015181)	1
	-----	3/8" PLATED WASHER (INCLUDED IN 015181)	1
18	-----	HANDLE CLIP (NOT SHOWN)	1
19	-----	TUBE WELDMENT, HANDLE EXT.	REF
20	3-565-011865	PLATE HANDLE BRACE	REF
21	-----	SQUARE GEARBOX COVER	1
22	-----	COVER SCREW	2
23	-----	BASE PLATE LIFT HANDLE	1
24	-----	NEW STYLE, CENTERED, CROSS SHAFT, STYLE III	1
25	-----	SLEEVE BEARING ON CROSS SHAFT	2

Mud Flaps

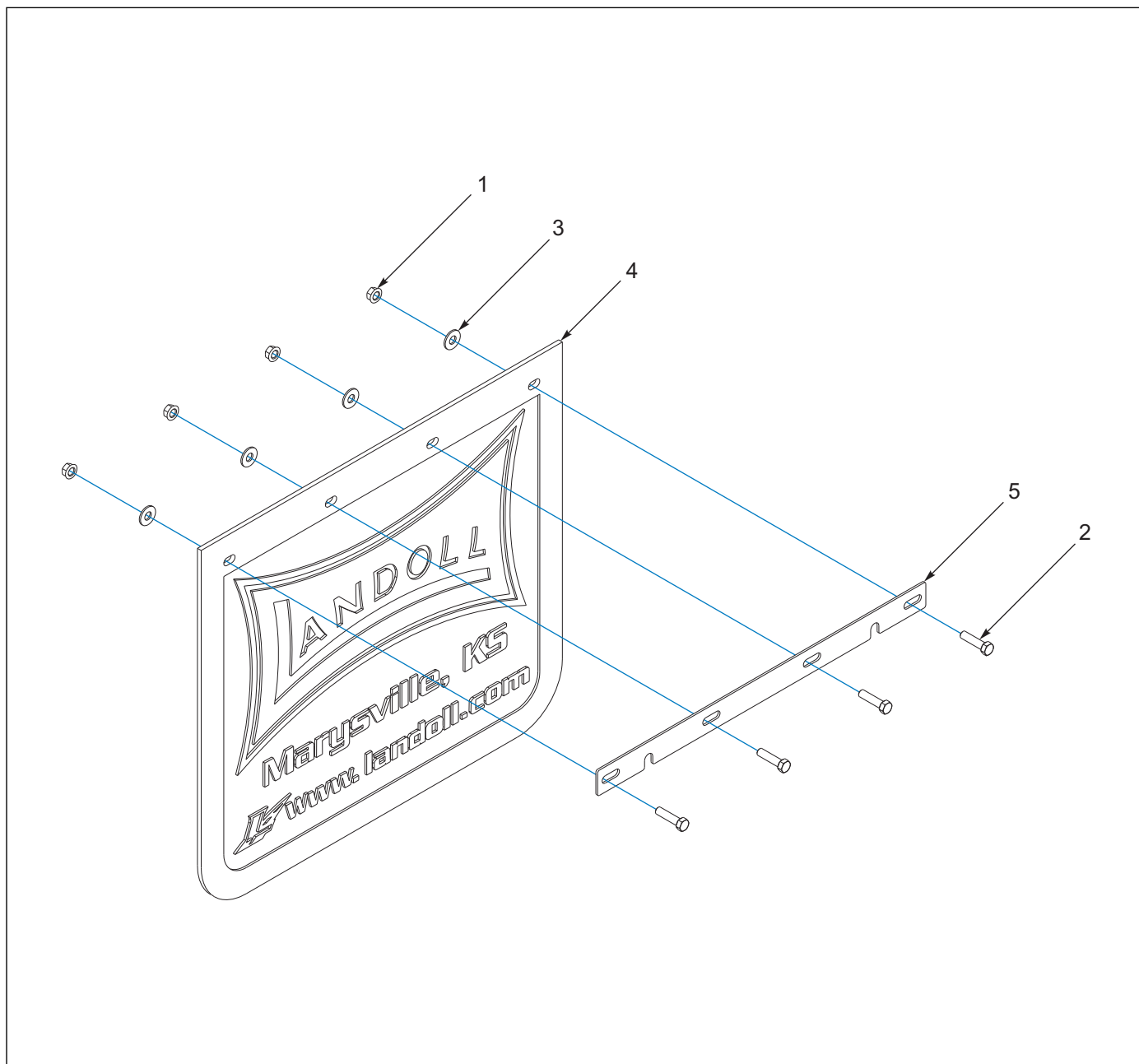


Figure 1-20: Mud Flap Assembly

Mud Flap Assembly

ITEM	PART NO.	DESCRIPTION	QTY.
	3-485-010010	MUD FLAP ASEMBLY	
1	1-510-010001	NUT, 3/8-16 UNC FLANGE LOCK	8
2	1-654-010051-07	SCREW,HEX CAP,3/8-16UNCX1-1/2	8
3	1-861-010032-11	WASHER, FLAT 3/8 W ZP/CD	8
4	3-485-010001	FLAP, MUD 21 IN	2
5	3-762-010017	CLAMP MUD FLAP	2

Ramps

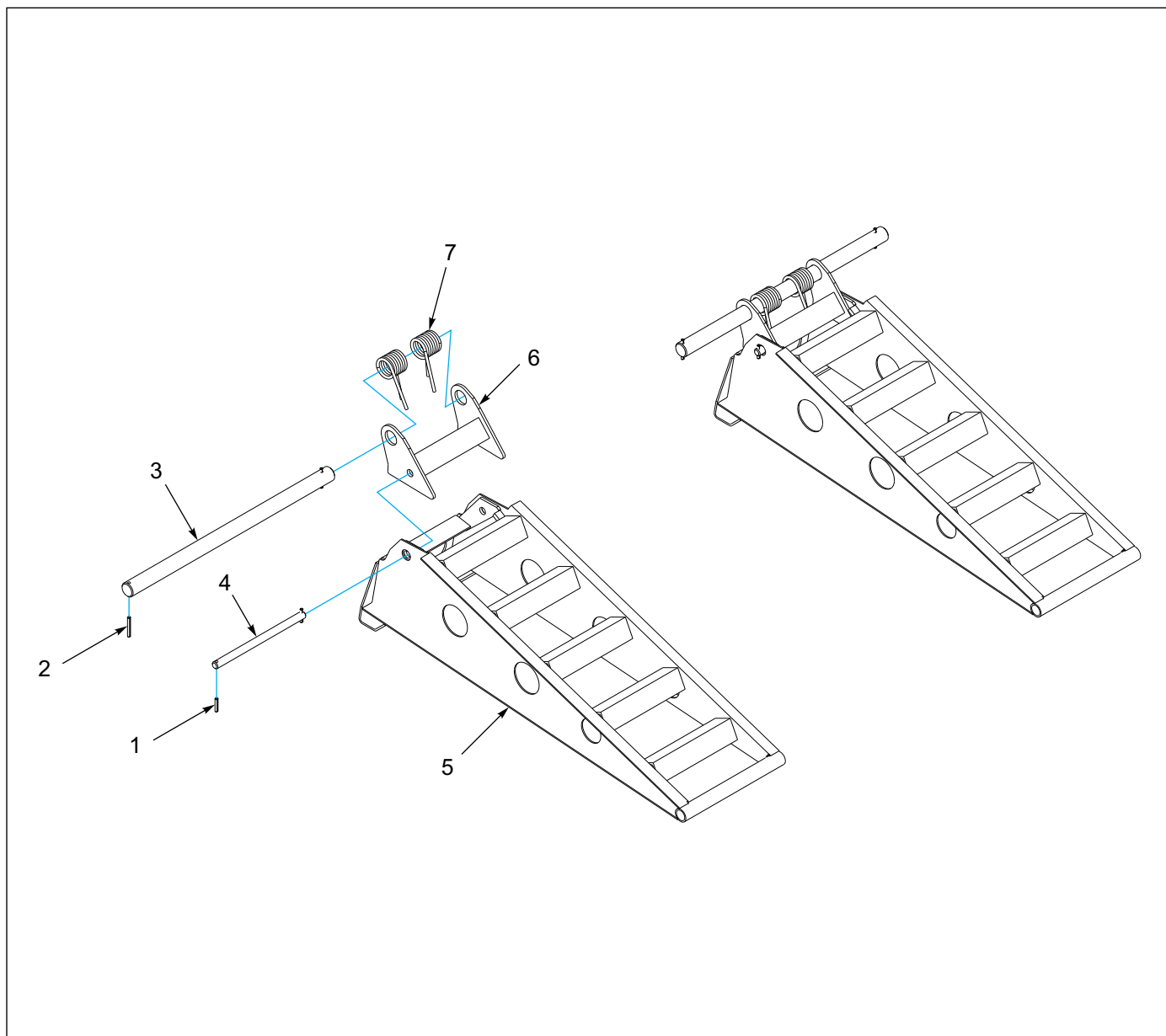


Figure 1-21: Ramp Assembly W/ Pins & Spring

Ramp Assembly W/ Pins & Spring

ITEM	PART NO.	DESCRIPTION	QTY.
	3-619-010260	RAMP ASSY W/PINS/SPRING	
1	1-647-010004255	PIN, SPRING, SLOTTED 3/8X2	4
2	1-647-010004259	SPRING PIN, SLOTTED 3/8X3	4
3	3-557-010541	PIN, RAMP 2"	2
4	3-557-010542	PIN, RAMP, 1IN	2
5	3-619-010258	RAMP WELDMENT, TAG	2
6	3-619-010259	RAMP PIVOT BRACKET WLDMT	2
7	3-720-010084	SPRING,TORSION,TAG RAMP	4

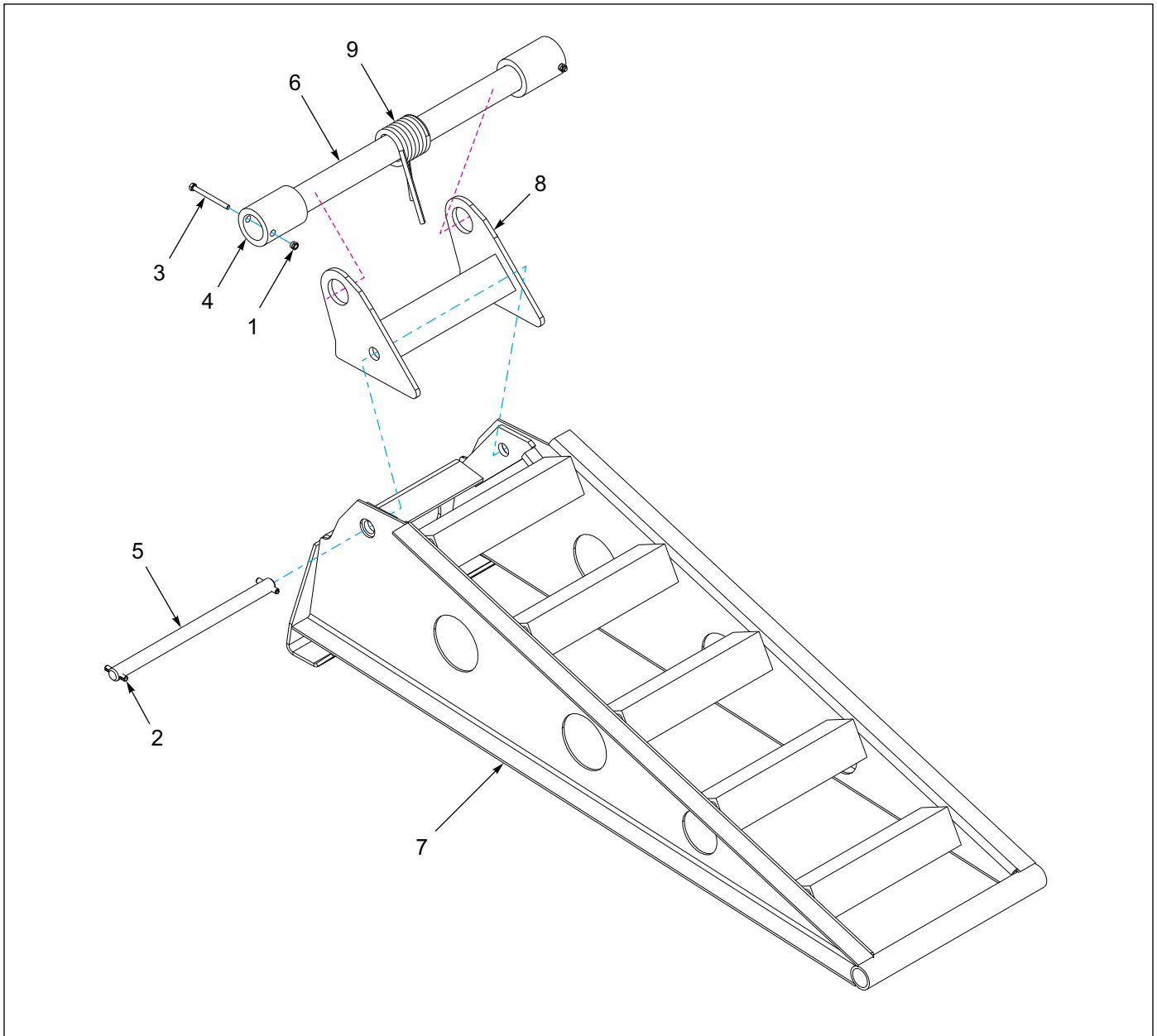


Figure 1-22: Ramp Assembly - Center (Option)

Ramp Assembly - Center (Option)

ITEM	PART NO.	DESCRIPTION	QTY.
	107214	RAMP ASSY, CENTER,SLFCLN	
1	1-512-010005-03	NUT HEX SLFLKG GRB 5/16-18	2
2	1-647-010004255	PIN, SPRING, SLOTTED 3/8X2	2
3	1-654-010049-15	SCREW,HEX CAP,5/16-18UNCX3.50	2
4	3-220-010030	COUPLER THIRD RAMP	2
5	3-557-010542	PIN, RAMP, 1IN	1
6	3-557-010547	PIN THIRD RAMP	1
7	3-619-010258	RAMP WELDMENT, TAG	1
8	3-619-010259	RAMP PIVOT BRACKET WLDMT	1
9	3-720-010084	SPRING,TORSION,TAG RAMP	1

Options

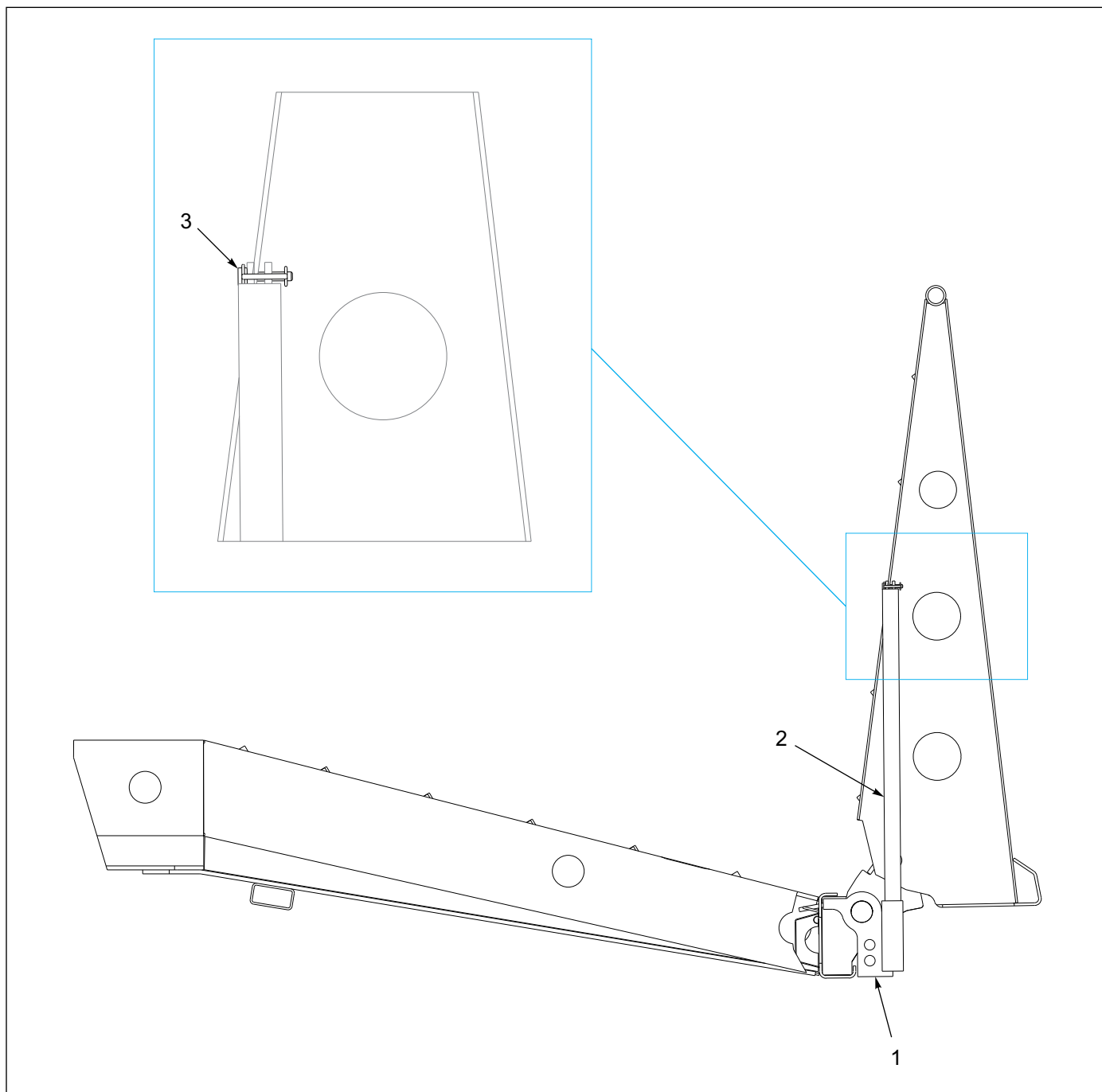


Figure 1-23: Anchor Ramp Upright Assembly (Option)

Anchor Ramp Upright Assembly (Option)

ITEM	PART NO.	DESCRIPTION	QTY.
	126348	ANCHOR RAMP UPRIGHT ASSY	
1	126347	ANCHOR WLDMT RAMP UPRIGHT	1
2	126344	STOP WLDMT RAMP UPRIGHT	1
3	111859	PIN, 5/16X1-1/2,RD LOCKING	1

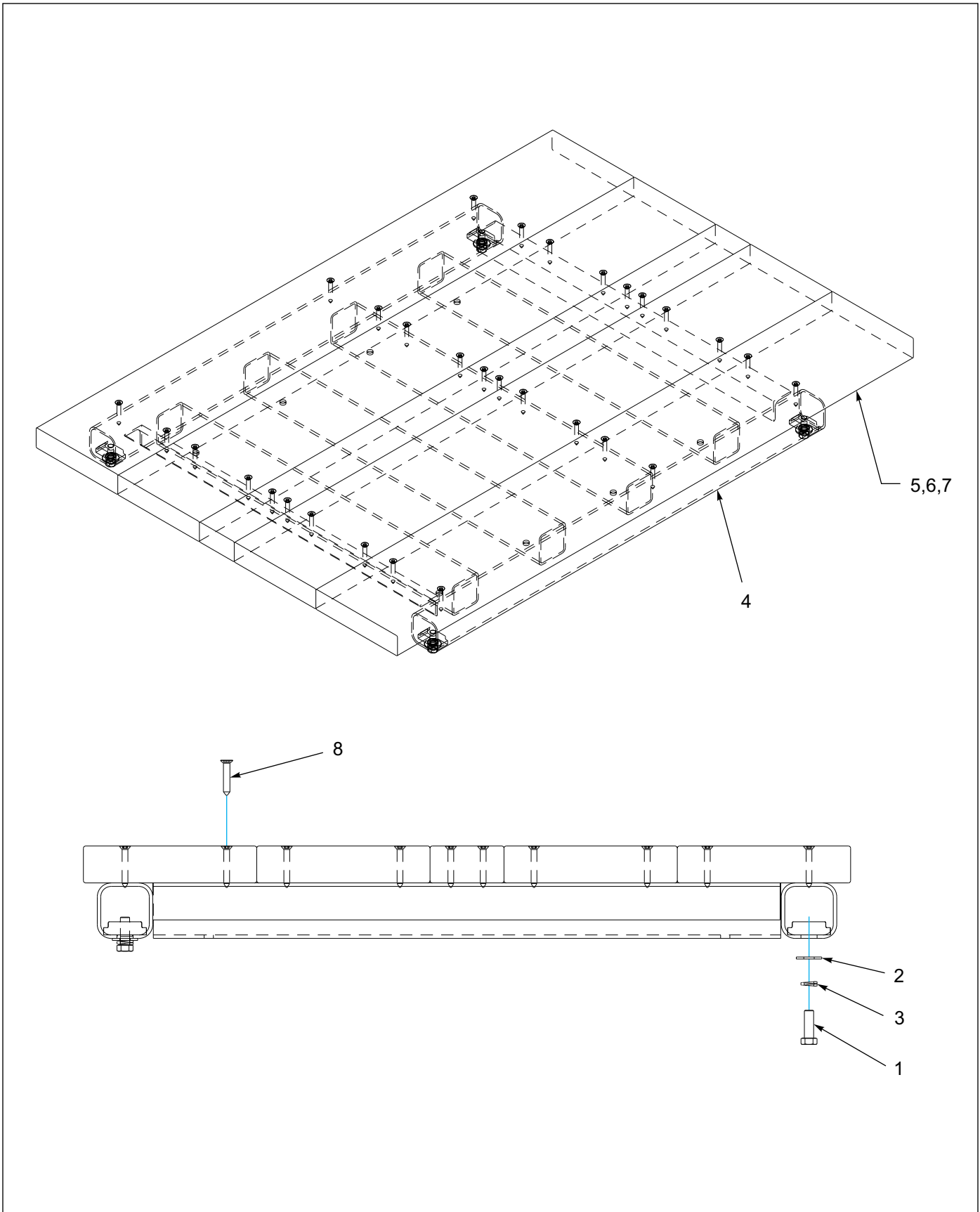


Figure 1-24: Beavertail Filler Installation (Option)

Beavertail Filler Installation (Option)

ITEM	PART NO.	DESCRIPTION	QTY.		
	124164	FILLER INSTALL BVTL L20	*		
	125144	FILLER BVTL L20 W/FIR		*	
	125145	FILLER BVTL L20 W/APITONG			*
1	1-654-010055-03	SCREW,HEX CAP,1/2-13UNCX1-1/2	4	4	4
2	1-861-010032-15	WASHER, FLAT 1/2 W ZP/CD	4	4	4
3	1-861-010034-13	WASHER, LKG HLCL SPR, 1/2	4	--	--
4	124154	FILLER WLDMT BVTL L20	1	1	1
5	RWD32999	WOOD 1-1/2X7-3/4 OAK	--	--	30
6	RWD39000	APITONG, 1-3/8 X 7.08, NET	--	30	45
7	RWD39013	FIR 2X10 NOM 20FT MIN 3.8	--	25	--
8	158732	SCREW,5/16X2-1/4ZP TORX FLOOR	--	30	45

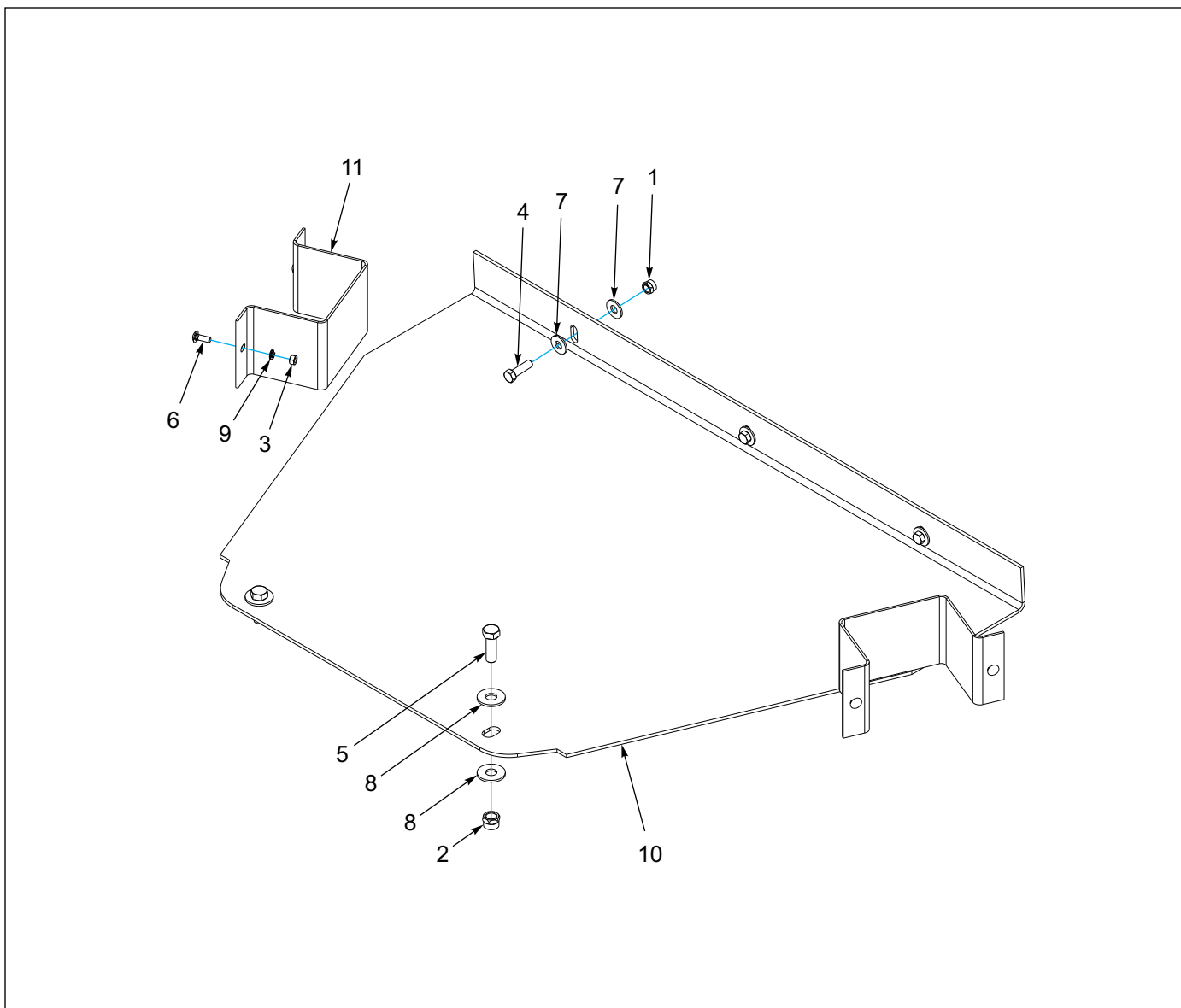


Figure 1-25: Toolbox Bottom Assembly (Option)

Toolbox Bottom Assembly (Option)

ITEM	PART NO.	DESCRIPTION	QTY.
	3-115-010178	TOOLBOX BOTTOM ASSY, TAG	
1	1-512-010005-05	NUT, HEX, SLFLKG GRB 3/8-16	3
2	1-512-010005-09	NUT,HEX,SLFLKG, 1/2-13 GRB	2
3	1-512-010007-05	NUT, HEX 1/4-20 GR2 ZP	4
4	1-654-010051-06	SCREW,HEX CAP 3/8-16UNCX1-1/4	3
5	1-654-010055-03	SCREW,HEX CAP,1/2-13UNCX1-1/2	2
6	1-654-010158-1	SCREW,RHD,SQ NCK,1/4-20UNCX3/4	4
7	1-861-010032-11	WASHER, FLAT 3/8 W ZP/CD	6
8	1-861-010032-15	WASHER, FLAT 1/2 W ZP/CD	4
9	1-861-010034-09	WASHER, LKG HLCL SPR, 1/4	4
10	3-115-010176	TOOLBOX BOTTOM 10T	1
11	3-681-010125	SHIELD, FOOT STEP	2

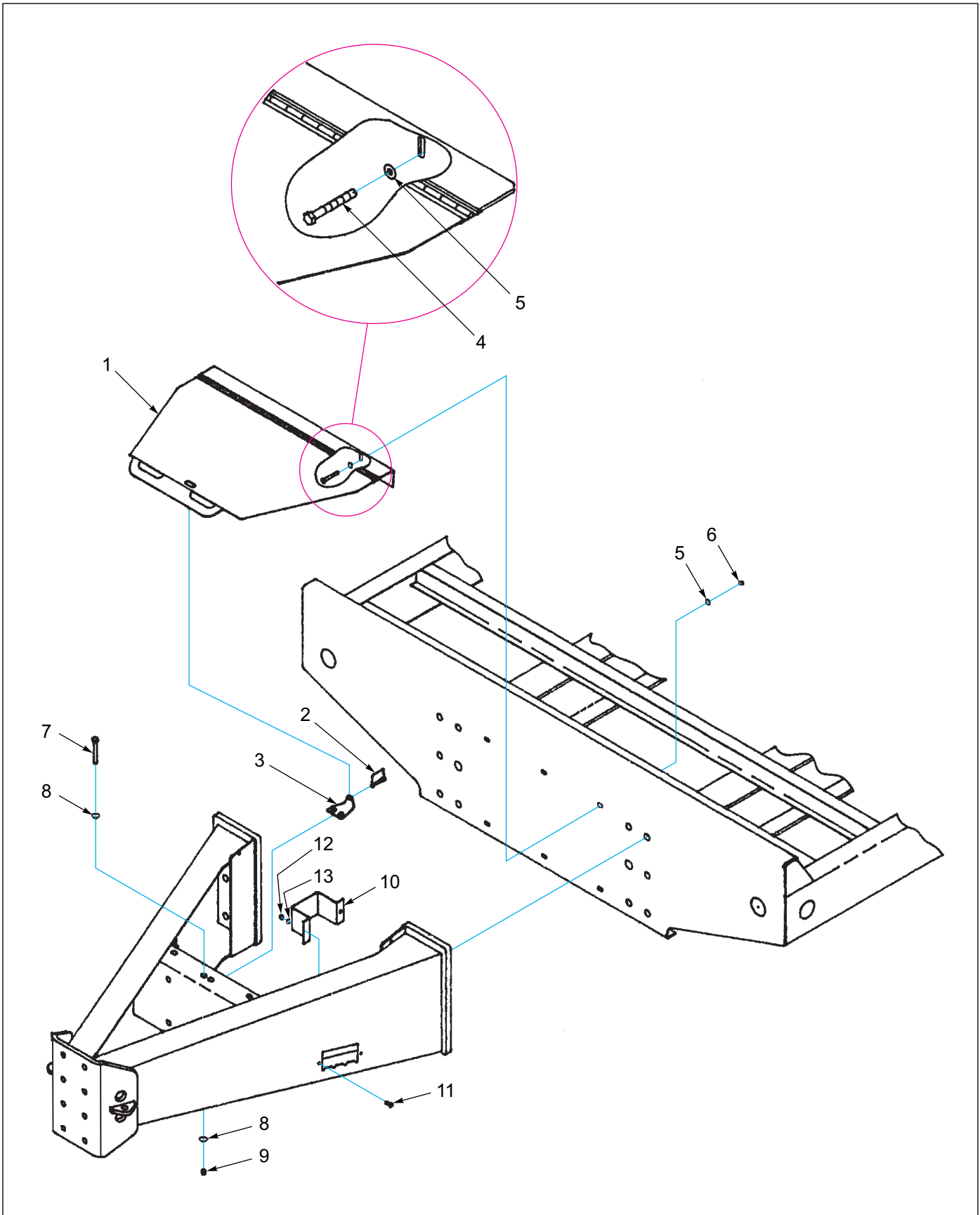


Figure 1-26: Tool Compartment Cover Assembly (Option)

Tool Compartment Cover Assembly (Option)

ITEM	PART NO.	DESCRIPTION	QTY.
	3-222-010207	COVER ASSY, TOOL COMPARTMENT, 10FT	
1	3-222-010206	COVER WLDMT TOOL COMPARTMENT	1
2	516-22PTL	RETAINING PIN MUD FLAP	1
3	3-120-010498	BRACKET, LID LOCK TAG	1
4	1-654-010051-06	SCREW,HEX CAP 3/8-16UNCX1-1/4	4
5	1-861-010032-11	WASHER, FLAT 3/8 W ZP/CD	6
6	1-512-010005-05	NUT, HEX, SLFLKG GRB 3/8-16	3
7	1-654-010055-03	SCREW,HEX CAP,1/2-13UNCX1-1/2	2
8	1-861-010032-15	WASHER, FLAT 1/2 W ZP/CD	4
9	1-512-010005-09	NUT,HEX,SLFLKG, 1/2-13 GRB	2
10	3-681-010125	SHIELD, FOOT STEP (OPTION)	2
11	1-654-010158-1	SCREW,RHD,SQ NCK,1/4-20UNCX3/4	4
12	1-512-010007-05	NUT, HEX 1/4-20 GR2 ZP	4
13	1-861-010034-09	WASHER, LKG HLCL SPR, 1/4	4

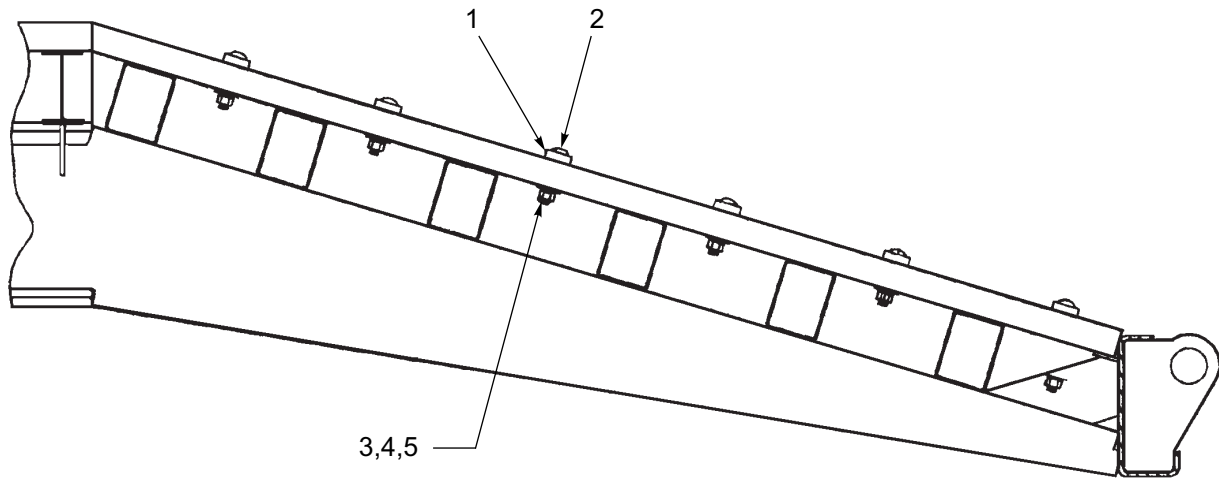


Figure 1-27: Traction Bar Installation (Option)

Traction Bar Installation (Option)

ITEM	PART NO.	DESCRIPTION	QTY.
	124163	BAR, TRACTION INSTL, L20LP, TRK	
1	124162	BAR, TRACTION TRACK L20LP 102	12
2	1-654-010070-09	SCREW RDHD 1/2-13X3 GR5 SQ NK	36
3	1-861-010032-15	WASHER, FLAT 1/2 W ZP/CD	36
4	1-861-010034-13	WASHER, LKG HLCL SPR, 1/2	36
5	1-512-010007-09	NUT, HEX 1/2-13 GR2 ZP	36

TABLE OF CONTENTS

Index

Numerics			
005-074-00	1-27	111933	1-31
005-075-00	1-27	111934	1-31
005-079-00	1-27	111948	1-33
007-139-00	1-27	111952	1-33
010-052-00	1-27	111953	1-33
014-056-00	1-27	111954	1-33
014-058-00	1-27	111955	1-33
034-031-00	1-27	111956	1-33
034-032-00	1-27	111959	1-33
034-048-00	1-27	111960	1-33
034-188-03	1-27	111961	1-33
034-189-03	1-27	111962	1-33
046-097-00	1-27	111963	1-33
056-018-00	1-27	111964	1-33
069-020-00	1-27	111965	1-33
069-078-00	1-27	111966	1-33
1/2X3/8BUSH	1-21	111967	1-33
101410	1-31	111968	1-33
101416	1-31	113819	1-27
101849	1-23	113820	1-27
101855	1-6	113821	1-28
103689	1-25, 1-27	113822	1-27
103690	1-25, 1-27	113823	1-27
103861	1-23	113835	1-33
104393	1-21	113838	1-33
107214	1-43	113840	1-33
108801	1-21	114529	1-37
108802	1-21	114586	1-21, 1-23
109709	1-37	114588	1-23
109710	1-12	114983	1-37
111859	1-44	118-2659-9	1-21
		1-203-010040-5	1-17
		122816	1-15

TABLE OF CONTENTS

122817	1-15	140259	1-25, 1-31
123597	1-15	141931	1-28
123712	1-15	143103	1-19
123738	1-15	143114	1-17, 1-19
124154	1-47	143237	1-25
124162	1-52	143260	1-25
124163	1-52	143261	1-25
124164	1-47	143262	1-25
12420301-017	1-6	143263	1-25
125144	1-47	143264	1-25
125145	1-47	144973	1-27
125242	1-25, 1-31	144974	1-27
126344	1-44	144975	1-27
126347	1-44	144976	1-27
126348	1-44	144977	1-27
128550	1-28	144978	1-27
1-297-010008-18	1-21	144979	1-28
1-297-010008-20	1-21	144980	1-28
1-297-010008-24	1-21	144981	1-28
1-297-010013-12	1-21	144982	1-28
1-297-010015-07	1-21	144983	1-31
1-297-010022-03	1-21	144984	1-31
131062	1-25	144985	1-31
131063	1-25	144986	1-31
131064	1-25	144987	1-31
131070	1-33	144988	1-31
132135	1-25	144989	1-31
1-384-010038054	1-21	144990	1-31
1-384-010038076	1-21	144991	1-31
1-384-010038084	1-21	144992	1-31
1385	1-11	144993	1-31
139281	1-25	144994	1-31
139282	1-25	144995	1-31
139283	1-25	144996	1-31
139284	1-25	144997	1-31
139285	1-25	144998	1-31
139286	1-25	144999	1-31

TABLE OF CONTENTS

145000	1-31	1-647-010004259	1-42
145001	1-31	1-654-010032-05	1-15
145002	1-31	1-654-010032-09	1-15
145003	1-31	1-654-010047-06	1-15
145004	1-31	1-654-010047-07	1-11
145005	1-31	1-654-010049-15	1-43
145006	1-31	1-654-010051-06	1-15, 1-48, 1-51
145007	1-31	1-654-010051-07	1-40
145008	1-31	1-654-010051-08	1-21
145009	1-33	1-654-010051-10	1-12, 1-15
145010	1-33	1-654-010055-03	1-47, 1-48, 1-51
145011	1-31	1-654-010059-04	1-12
147190	1-19	1-654-010061-07	1-11
147191	1-19	1-654-010061-09	1-11
147464	1-23	1-654-010070-09	1-52
148641	1-12	1-654-010100026	1-15
150076	1-11, 1-15	1-654-010100071	1-15
1-510-010001	1-40	1-654-010158-1	1-48, 1-51
1-512-010002-15	1-11, 1-15	1-656-010003051	1-17
1-512-010004-03	1-15	1-656-010003053	1-19
1-512-010005-01	1-11, 1-15	1-656-010003055	1-17
1-512-010005-03	1-43	165766	1-37
1-512-010005-05	1-12, 1-15, 1-21, 1-48, 1-51	179902	1-17, 1-19
1-512-010005-09	1-48, 1-51	180570	1-17, 1-19
1-512-010005-13	1-12	1-822-010003	1-15
1-512-010005-15	1-11	1-833-010002	1-21
1-512-010007-03	1-17, 1-19	1-833-010003	1-21
1-512-010007-05	1-48, 1-51	183611	1-12
1-512-010007-09	1-52	1-861-010032-03	1-15, 1-17
152636	1-33	1-861-010032-07	1-11, 1-15
155780	1-6	1-861-010032-11	1-12, 1-15, 1-21, 1-40, 1-48, 1-51
1-560-010002-03	1-21	1-861-010032-15	1-47, 1-48, 1-51, 1-52
1-560-010002-04	1-21	1-861-010032-19	1-12
1-560-010002-05	1-21	1-861-010032-20	1-11, 1-15
158732	1-47	1-861-010032-21	1-11, 1-15
160360	1-12	1-861-010034-07	1-17, 1-19
163502	1-37	1-861-010034-09	1-48, 1-51
1-647-010004255	1-42, 1-43	1-861-010034-13	1-47, 1-52

TABLE OF CONTENTS

1-861-010034-17	1-11	3-120-010498	1-51
187833	1-17, 1-19	3-128-010032	1-17
187857	1-19	3-174-010018036	1-11, 1-15
187858	1-19	3-174-010042	1-11, 1-15
187859	1-19	3-187-010019	1-15
187860	1-17, 1-19	3-201-010002	1-17
187863	1-17, 1-19	3-220-010030	1-43
187864	1-17, 1-19	3-222-010206	1-51
187868	1-17, 1-19	3-222-010207	1-51
1-879-010010	1-17	3-222-010219	1-15
1-879-010011	1-17	3-272-010021	1-17
189280	1-17	3-304-010078	1-9
192208	1-6	3-304-010078-01	1-9
196167	1-6	3-304-010079-01	1-9
196170	1-6	3-304-010080-02	1-9
196173	1-6	3-336-010060	1-15
196177	1-6	3-375-010597	1-11
199185	1-6	3-375-010599	1-11
199186	1-6	3-375-010609-02	1-15
199187	1-6	3-375-010610-01	1-15
201604	1-17	3-382-010019	1-11, 1-15
201850	1-17	3-384-010020	1-21
202352	1-17	3-423-010035	1-39
202419	1-17	3-423-010038	1-35
202420	1-17	3-423-010039	1-11
202712	1-6	3-423-010042	1-15
202713	1-6	3-443-010020	1-15
204228	1-37	3-485-010001	1-40
205045	1-19	3-485-010010	1-40
205054	1-6	3-557-010541	1-42
207360	1-37	3-557-010542	1-42, 1-43
2083-8-8S	1-21	3-557-010547	1-43
230763	1-25	3-565-011865	1-15, 1-39
2552	1-17	3-573-010086	1-6
3-042-010146-02	1-25	3-573-010210	1-6
3-115-010176	1-48	3-573-010377	1-6
3-115-010178	1-48	3-619-010258	1-42, 1-43

TABLE OF CONTENTS

3-619-010259	1-42, 1-43
3-619-010260	1-42
3-654-010129-1	1-9
3-659-010013	1-15
3-681-010125	1-48, 1-51
3-711-010123003	1-15
3-711-010123006	1-15
3-720-010084	1-42, 1-43
3-762-010017	1-40
3-780-010002	1-21
3-831-010178	1-15
500177	1-35, 1-39
500220	1-35
516-22PTL	1-15, 1-51
55B61-6	1-21
55B61-7	1-21
56D4	1-21
758-181	1-21
805-2	1-21

A

A10037.3	1-37
A10038.7	1-37

C

C10256	1-37
--------------	------

F

F-203	1-11
-------------	------

K

K71-101-00	1-27
K71-460-00	1-27

R

RWD32999	1-47
RWD39000	1-9, 1-47
RWD39013	1-9, 1-47

T

TR416	1-25
-------------	------

TABLE OF CONTENTS



Equipment from Landoll Company, LLC. is built to exacting standards ensured by ISO 9001:2015 registration at all Landoll manufacturing facilities.

Models L2024A, L2024HDA, L2424A TAG Trailer Parts Manual

Re-Order Part Number F-928

LANDOLL COMPANY, LLC.

1900 North Street

Marysville, Kansas 66508

(785) 562-5381

800-428-5655 ~ WWW.LANDOLL.COM



Copyright 12/4/23. Landoll Company, LLC.

“All rights reserved, including the right to reproduce this material or portions thereof in any form.”